

COPYRIGHT © Hangzhou EZVIZ Software Co., Ltd.. ALL RIGHTS RESERVED.

Any and all information, including, among others, wordings, pictures, graphs are the properties of Hangzhou EZVIZ Software Co., Ltd. (hereinafter referred to as “EZVIZ”). This user manual (hereinafter referred to as “the Manual”) cannot be reproduced, changed, translated, or distributed, partially or wholly, by any means, without the prior written permission of EZVIZ. Unless otherwise stipulated, EZVIZ does not make any warranties, guarantees or representations, express or implied, regarding to the Manual.



### **About this Manual**

The Manual includes instructions for using and managing the product. Pictures, charts, images and all other information hereinafter are for description and explanation only. The information contained in the Manual is subject to change, without notice, due to firmware updates or other reasons. Please find the latest version in the EZVIZ™ website (<http://www.ezvizlife.com>).

### **Revision Record**

New release – January, 2019

### **Trademarks Acknowledgement**

 EZVIZ™,  and other EZVIZ's trademarks and logos are the properties of EZVIZ in various jurisdictions. Other trademarks and logos mentioned below are the properties of their respective owners.

### **Legal Disclaimer**

TO THE MAXIMUM EXTENT PERMITTED BY APPLICABLE LAW, THE PRODUCT DESCRIBED, WITH ITS HARDWARE, SOFTWARE AND FIRMWARE, IS PROVIDED “AS IS”, WITH ALL FAULTS AND ERRORS, AND EZVIZ MAKES NO WARRANTIES, EXPRESS OR IMPLIED, INCLUDING WITHOUT LIMITATION, MERCHANTABILITY, SATISFACTORY QUALITY, FITNESS FOR A PARTICULAR PURPOSE, AND NON-INFRINGEMENT OF THIRD PARTY. IN NO EVENT WILL EZVIZ, ITS DIRECTORS, OFFICERS, EMPLOYEES, OR AGENTS BE LIABLE TO YOU FOR ANY SPECIAL, CONSEQUENTIAL, INCIDENTAL, OR INDIRECT DAMAGES, INCLUDING, AMONG OTHERS, DAMAGES FOR LOSS OF BUSINESS PROFITS, BUSINESS INTERRUPTION, OR LOSS OF DATA OR DOCUMENTATION, IN CONNECTION WITH THE USE OF THIS PRODUCT, EVEN IF EZVIZ HAS BEEN ADVISED OF THE POSSIBILITY OF SUCH DAMAGES.

TO THE MAXIMUM EXTENT PERMITTED BY APPLICABLE LAW, IN NO EVENT SHALL EZVIZ'S TOTAL LIABILITY FOR ALL DAMAGES EXCEED THE ORIGINAL PURCHASE

#### PRICE OF THE PRODUCT.

EZVIZ DOES NOT UNDERTAKE ANY LIABILITY FOR PERSONAL INJURY OR PROPERTY DAMAGE AS THE RESULT OF PRODUCT INTERRUPTION OR SERVICE TERMINATION CAUSED BY: A) IMPROPER INSTALLATION OR USAGE OTHER THAN AS REQUESTED; B) THE PROTECTION OF NATIONAL OR PUBLIC INTERESTS; C) FORCE MAJEURE; D) YOURSELF OR THE THIRD PARTY, INCLUDING WITHOUT LIMITATION, USING ANY THIRD PARTY'S PRODUCTS, SOFTWARE, APPLICATIONS, AND AMONG OTHERS. REGARDING TO THE PRODUCT WITH INTERNET ACCESS, THE USE OF PRODUCT SHALL BE WHOLLY AT YOUR OWN RISKS. EZVIZ SHALL NOT TAKE ANY RESPONSIBILITIES FOR ABNORMAL OPERATION, PRIVACY LEAKAGE OR OTHER DAMAGES RESULTING FROM CYBER ATTACK, HACKER ATTACK, VIRUS INSPECTION, OR OTHER INTERNET SECURITY RISKS; HOWEVER, EZVIZ WILL PROVIDE TIMELY TECHNICAL SUPPORT IF REQUIRED. SURVEILLANCE LAWS AND DATA PROTECTION LAWS VARY BY JURISDICTION. PLEASE CHECK ALL RELEVANT LAWS IN YOUR JURISDICTION BEFORE USING THIS PRODUCT IN ORDER TO ENSURE THAT YOUR USE CONFORMS TO THE APPLICABLE LAW. EZVIZ SHALL NOT BE LIABLE IN THE EVENT THAT THIS PRODUCT IS USED WITH ILLEGITIMATE PURPOSES.

IN THE EVENT OF ANY CONFLICTS BETWEEN THE ABOVE AND THE APPLICABLE LAW, THE LATTER PREVAILS.

# 包裝內容



攝影機 (x1)



底座 (x1)



螺絲組 (x1)



鑽孔模板 (x1)



電源線 (x1)



電源變壓器 (x1)



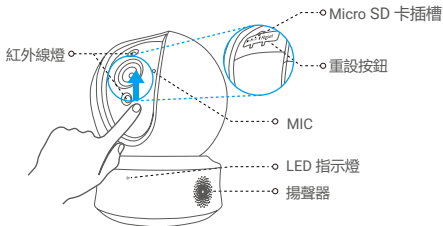
法規資訊 (x1)



快速使用指南 (x1)

**i** 攝影機外觀視您實際購買的機型而定。

# 基本元件



## 名稱

LED 指示燈

Micro SD 卡 (另售)

重設按鈕

MIC

揚聲器

## 說明

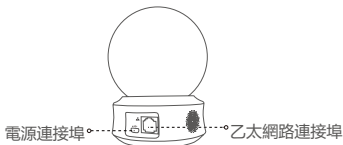
- 恆亮紅燈：攝影機啟動中。  
緩慢閃紅燈：Wi-Fi 連線失敗。  
快速閃紅燈：裝置例外狀況 (例如 MicroSD 卡錯誤)。
- 恆亮藍燈：影片正在 EZVIZ 應用程式中檢視或播放。  
緩慢閃藍燈：攝影機正常運作。  
快速閃藍燈：攝影機已準備就緒執行 Wi-Fi 連線。

記憶卡使用前請先在 EZVIZ 應用程式中初始化。

按住 5 秒鐘即可重新啟動並將所有參數設定為預設值。

用於音訊輸入。

用於音訊輸出。



# 設定

## i 低功率電波輻射性電機管理辦法

### 第十二條

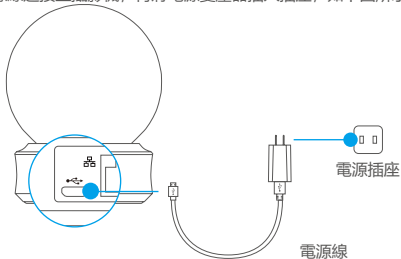
經型式認證合格之低功率射頻電機，非經許可，公司、商號或使用者均不得擅自變更頻率、加大功率或變更原設計之特性及功能。

### 第十四條

低功率射頻電機之使用不得影響飛航安全及干擾合法通信；經發現有干擾現象時，應立即停用，並改善至無干擾時方得繼續使用。前項合法通信，指依電信法規定作業之無線電通信。低功率射頻電機須忍受合法通信或工業、科學及醫療用電波輻射性電機設備之干擾。

## 1 開啟電源

先將電源線連接至攝影機，再將電源變壓器插入插座，如下圖所示。



i LED 轉變成快速閃藍燈，表示攝影機已開啟電源並可進行 Wi-Fi 設定。

## 2 攝影機設定

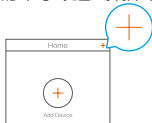
### 1. 建立使用者帳戶

- 使用 2.4GHz 網路將行動電話連線至 Wi-Fi。
- 在 App Store 或 Google Play (TM) 中搜尋「EZVIZ」。
- 下載並安裝 EZVIZ 應用程式。
- 啟動應用程式。
- 啟動精靈並建立和註冊 EZVIZ 使用者帳戶。

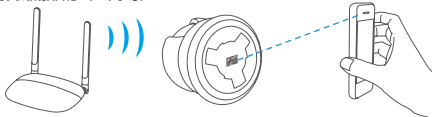
**i** 攝影機適用 2.4GHz Wi-Fi 訊號。若您擁有雙頻路由器與個別的 2.4Ghz 及 5GHz 網路，請確認將手機連線至 2.4Ghz 網路。

### 2. 將攝影機新增至 EZVIZ

- 使用 EZVIZ 應用程式登入帳號。
- 在主畫面中，點選右上角的「+」以進入掃描 QR 代碼介面。



- 掃描攝影機底部的 QR 代碼。



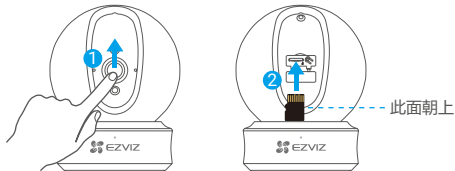
- 依照 EZVIZ 應用程式精靈完成 Wi-Fi 設定。

- i** 在下列任何情況時，按住重設按鈕 5 秒鐘：
- 攝影機無法連線至 Wi-Fi 網路。
  - 您想要選取其他 Wi-Fi 網路。

# 安裝 (選擇性)

## 1 安裝 Micro SD 卡 (選擇性)

1. 將球體往上旋轉直到您看見卡片插槽。
2. 將 Micro SD 卡 (另售) 插入卡片插槽，如下圖所示。

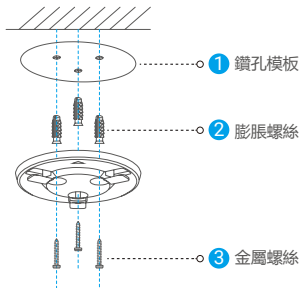


- i** 安裝 Micro SD 卡之後，您應該在使用前於 EZVIZ 應用程式中將卡片初始化。
3. 在 EZVIZ 應用程式中，點擊裝置設定介面中的 **Storage Status (儲存裝置狀態)** 查看 SD 卡狀態。
4. 如果記憶卡狀態顯示為 **Uninitialized (未初始化)**，請點擊以將記憶卡初始化。
- i** 此狀態會更改成 **Normal (正常)**，並可儲存影片。

## 2 安裝底座

攝影機可以被平放或安裝在天花板。這裡以天花板安裝為例。

- i** 請確定天花板的強度足以承受三倍的攝影機重量。
  - 避免將攝影機放置光線充足並直接照射攝影機鏡頭的區域。
- 將鑽孔模板放在已選擇安裝攝影機的表面上。
  - (僅限水泥牆/天花板) 依據模板鑽出螺絲孔，再插入三個膨脹螺絲。
  - 依據模板使用三顆金屬螺絲固定攝影機。

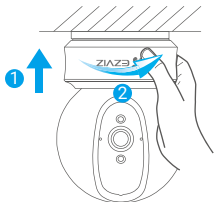


- i** 必要時，請在安裝底座後撕掉鑽孔模板。



### 3 安裝攝影機

將攝影機安裝在底座，並以順時針方向旋轉至固定為止。



- i** 安裝攝影機之後，請前往 EZVIZ 應用程式將攝影機影像轉正。
- i** 如需詳細資訊，請造訪 [www.ezvizlife.com](http://www.ezvizlife.com)。