

COPYRIGHT © Hangzhou EZVIZ Software Co., Ltd.. ALL RIGHTS RESERVED.

Any and all information, including, among others, wordings, pictures, graphs are the properties of Hangzhou EZVIZ Software Co., Ltd. (hereinafter referred to as "EZVIZ"). This user manual (hereinafter referred to as "the Manual") cannot be reproduced, changed, translated, or distributed, partially or wholly, by any means, without the prior written permission of EZVIZ. Unless otherwise stipulated, EZVIZ does not make any warranties, guarantees or representations, express or implied, regarding to the Manual.



### **About this Manual**

The Manual includes instructions for using and managing the product. Pictures, charts, images and all other information hereinafter are for description and explanation only. The information contained in the Manual is subject to change, without notice, due to firmware updates or other reasons. Please find the latest version in the **EZVIZ™** website (<http://www.ezvizlife.com>).

### **Revision Record**

New release – January, 2019

### **Trademarks Acknowledgement**

 **EZVIZ™**,  **™**, and other EZVIZ's trademarks and logos are the properties of EZVIZ in various jurisdictions. Other trademarks and logos mentioned below are the properties of their respective owners.

### **Legal Disclaimer**

TO THE MAXIMUM EXTENT PERMITTED BY APPLICABLE LAW, THE PRODUCT DESCRIBED, WITH ITS HARDWARE, SOFTWARE AND FIRMWARE, IS PROVIDED "AS IS", WITH ALL FAULTS AND ERRORS, AND EZVIZ MAKES NO WARRANTIES, EXPRESS OR IMPLIED, INCLUDING WITHOUT LIMITATION, MERCHANTABILITY, SATISFACTORY QUALITY, FITNESS FOR A PARTICULAR PURPOSE, AND NON-INFRINGEMENT OF THIRD PARTY. IN NO EVENT WILL EZVIZ, ITS DIRECTORS, OFFICERS, EMPLOYEES, OR AGENTS BE LIABLE TO YOU FOR ANY SPECIAL, CONSEQUENTIAL, INCIDENTAL, OR INDIRECT DAMAGES, INCLUDING, AMONG OTHERS, DAMAGES FOR LOSS OF BUSINESS PROFITS, BUSINESS INTERRUPTION, OR LOSS OF DATA OR DOCUMENTATION, IN CONNECTION WITH THE USE OF THIS PRODUCT, EVEN IF EZVIZ HAS BEEN ADVISED OF THE POSSIBILITY OF SUCH DAMAGES.

TO THE MAXIMUM EXTENT PERMITTED BY APPLICABLE LAW, IN NO EVENT SHALL EZVIZ'S TOTAL LIABILITY FOR ALL DAMAGES EXCEED THE ORIGINAL PURCHASE PRICE OF THE PRODUCT.

EZVIZ DOES NOT UNDERTAKE ANY LIABILITY FOR PERSONAL INJURY OR PROPERTY DAMAGE AS THE RESULT OF PRODUCT INTERRUPTION OR SERVICE TERMINATION CAUSED BY: A) IMPROPER INSTALLATION OR USAGE OTHER THAN AS REQUESTED; B) THE PROTECTION OF NATIONAL OR PUBLIC INTERESTS; C) FORCE MAJEURE; D) YOURSELF OR THE THIRD PARTY, INCLUDING WITHOUT LIMITATION, USING ANY THIRD PARTY'S PRODUCTS, SOFTWARE, APPLICATIONS, AND AMONG OTHERS.

REGARDING TO THE PRODUCT WITH INTERNET ACCESS, THE USE OF PRODUCT SHALL BE WHOLLY AT YOUR OWN RISKS. EZVIZ SHALL NOT TAKE ANY RESPONSIBILITIES FOR ABNORMAL OPERATION, PRIVACY LEAKAGE OR OTHER DAMAGES RESULTING FROM CYBER ATTACK, HACKER ATTACK, VIRUS INSPECTION, OR OTHER INTERNET SECURITY RISKS; HOWEVER, EZVIZ WILL PROVIDE TIMELY TECHNICAL SUPPORT IF REQUIRED. SURVEILLANCE LAWS AND DATA PROTECTION LAWS VARY BY JURISDICTION. PLEASE CHECK ALL RELEVANT LAWS IN YOUR JURISDICTION BEFORE USING THIS PRODUCT IN ORDER TO ENSURE THAT YOUR USE CONFORMS TO THE APPLICABLE LAW. EZVIZ SHALL NOT BE LIABLE IN THE EVENT THAT THIS PRODUCT IS USED WITH ILLEGITIMATE PURPOSES.

IN THE EVENT OF ANY CONFLICTS BETWEEN THE ABOVE AND THE APPLICABLE LAW, THE LATTER PREVAILS.

# Isi Kemasan



Kamera (x1)



Acuan Bor (x1)

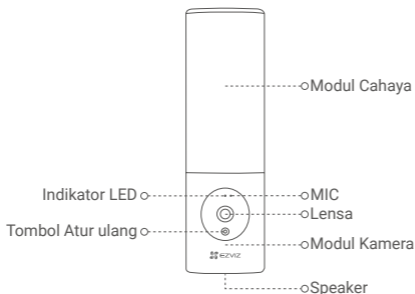


Perlengkapan Sekrup (x1)



Buku Panduan (x1)

# Informasi Dasar

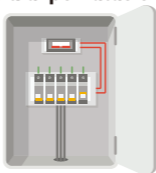


Nama	Deskripsi
Indikator LED	<ul style="list-style-type: none"><li>• Merah Pekat: Kamera mulai menyala.</li><li>• Merah Berkedip Pelan: Sambungan Wi-Fi gagal.</li><li>• Merah Berkedip Cepat: Pengecualian kamera (mis. kesalahan kartu memori).</li><li>• Biru Pekat: Video sedang ditayangkan secara langsung pada aplikasi EZVIZ.</li><li>• Biru Berkedip Pelan: Kamera berfungsi dengan baik.</li><li>• Biru Berkedip Cepat: Kamera siap terhubung ke Wi-Fi.</li></ul>
Lensa	Lensa dapat diatur 15 derajat ke arah bawah.
Modul Kamera	Modul kamera dapat diputar 10 derajat ke kiri dan ke kanan.
Tombol Atur ulang	Tahan selama 4 detik untuk memulai ulang dan mengembalikan semua parameter ke pengaturan awal.

# Pemasangan

- Ketinggian pemasangan yang disarankan: 6-7 kaki (1,8-2,2 m) di atas permukaan tanah.
- Kamera memiliki kartu memori bawaan untuk penyimpanan video. Tidak perlu memasang kartu memori tambahan.

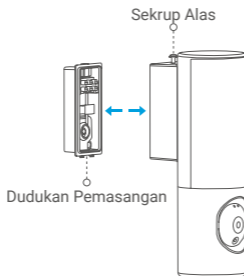
## 1. Matikan listrik melalui pemutus sirkit.



- Jika Anda tidak tahu letak pemutus sirkit Anda atau cara mematikan listrik, harap berkonsultasi dengan teknisi berlisensi.
- Jangan menyentuh pemutus sirkit selama proses pemasangan.

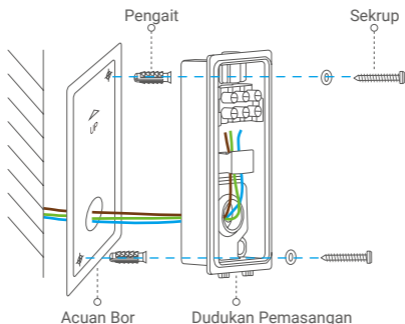
## 2. Melepaskan alas pemasangan dari kamera.

Buka sekrup alas menggunakan obeng (tidak termasuk dalam paket) dan tarik alas pemasangan dari kamera.



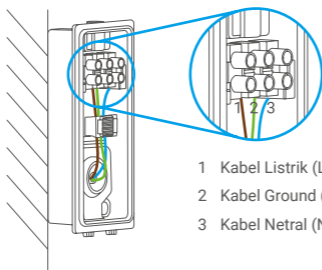
## 3. Memasang alas pemasangan.

- Tempatkan templat bor pada permukaan yang Anda pilih untuk memasang alas.
- (Hanya untuk dinding semen) Bor lubang sekrup sesuai templat dan masukkan pengait.
- Lewatkan kabel melalui dinding, templat bor, dan karet alas pemasangan.
- Gunakan sekrup untuk memasang alas pemasangan.



#### 4. Menghubungkan kabel.

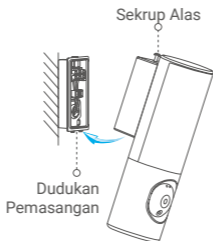
- Hubungkan Kabel Netral (N), Kabel Ground (GN) dan Kabel Listrik (L) satu per satu.
- Kencangkan dengan obeng.



- 1 Kabel Listrik (L)
- 2 Kabel Ground (GN)
- 3 Kabel Netral (N)

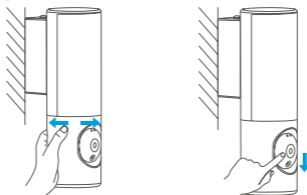
#### 5. Memasang kamera ke alas pemasangan.

- Kencangkan bagian bawah alas pemasangan pada kamera.
- Tekan alas pemasangan dan kamera secara bersamaan.
- Kencangkan sekrup alas yang terletak di bagian atas kamera.

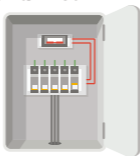


## 6. Menyesuaikan sudut modul kamera.

Anda dapat menyesuaikan sudut horizontal dan vertikal modul kamera sesuai kebutuhan.

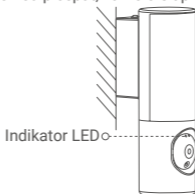


## 7. Aktifkan kembali aliran listrik di kotak sekring.



## 8. Pastikan kamera memiliki daya.

Setelah memulihkan daya, saat lampu menyala dan indikator LED di bagian depan kamera biru berkedip cepat, kamera siap untuk pengaturan.



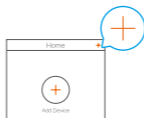
# Pengaturan

## 1. Dapatkan aplikasi EZVIZ

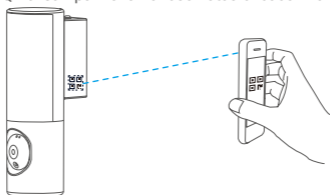
- Sambungkan telepon seluler Anda ke Wi-Fi.
- Unduh dan pasang aplikasi EZVIZ dengan mencari "EZVIZ" di App Store atau Google Play Store™.
- Jalankan aplikasi dan daftarkan akun pengguna EZVIZ.

## 2. Tambahkan kamera ke EZVIZ

- Masuk ke akun Anda menggunakan aplikasi EZVIZ.  
Di layar Utama, ketuk "+" di sudut kanan atas untuk masuk ke antarmuka Pindai Kode QR.



- Pindai kode QR di sampul Buku Panduan atau di badan kamera.



- Ikuti petunjuk aplikasi EZVIZ untuk menyelesaikan konfigurasi Wi-Fi.

**i** Jika Anda ingin mengubah Wi-Fi kamera Anda, tekan dan tahan tombol atur ulang selama 4 detik dan ulangi langkah-langkah di atas.

**i** Untuk informasi lebih rinci, silakan kunjungi [www.ezvizlife.com](http://www.ezvizlife.com).