

COPYRIGHT © Hangzhou EZVIZ Software Co., Ltd.. ALL RIGHTS RESERVED.

Any and all information, including, among others, wordings, pictures, graphs are the properties of Hangzhou EZVIZ Software Co., Ltd. (hereinafter referred to as “EZVIZ”). This user manual (hereinafter referred to as “the Manual”) cannot be reproduced, changed, translated, or distributed, partially or wholly, by any means, without the prior written permission of EZVIZ. Unless otherwise stipulated, EZVIZ does not make any warranties, guarantees or representations, express or implied, regarding to the Manual.



About this Manual

The Manual includes instructions for using and managing the product. Pictures, charts, images and all other information hereinafter are for description and explanation only. The information contained in the Manual is subject to change, without notice, due to firmware updates or other reasons. Please find the latest version in the EZVIZ™ website (<http://www.ezvizlife.com>).

Revision Record

New release – January, 2019

Trademarks Acknowledgement

 EZVIZ™,  and other EZVIZ's trademarks and logos are the properties of EZVIZ in various jurisdictions. Other trademarks and logos mentioned below are the properties of their respective owners.

Legal Disclaimer

TO THE MAXIMUM EXTENT PERMITTED BY APPLICABLE LAW, THE PRODUCT DESCRIBED, WITH ITS HARDWARE, SOFTWARE AND FIRMWARE, IS PROVIDED “AS IS”, WITH ALL FAULTS AND ERRORS, AND EZVIZ MAKES NO WARRANTIES, EXPRESS OR IMPLIED, INCLUDING WITHOUT LIMITATION, MERCHANTABILITY, SATISFACTORY QUALITY, FITNESS FOR A PARTICULAR PURPOSE, AND NON-INFRINGEMENT OF THIRD PARTY. IN NO EVENT WILL EZVIZ, ITS DIRECTORS, OFFICERS, EMPLOYEES, OR AGENTS BE LIABLE TO YOU FOR ANY SPECIAL, CONSEQUENTIAL, INCIDENTAL, OR INDIRECT DAMAGES, INCLUDING, AMONG OTHERS, DAMAGES FOR LOSS OF BUSINESS PROFITS, BUSINESS INTERRUPTION, OR LOSS OF DATA OR DOCUMENTATION, IN CONNECTION WITH THE USE OF THIS PRODUCT, EVEN IF EZVIZ HAS BEEN ADVISED OF THE POSSIBILITY OF SUCH DAMAGES.

TO THE MAXIMUM EXTENT PERMITTED BY APPLICABLE LAW, IN NO EVENT SHALL EZVIZ'S TOTAL LIABILITY FOR ALL DAMAGES EXCEED THE ORIGINAL PURCHASE

PRICE OF THE PRODUCT.

EZVIZ DOES NOT UNDERTAKE ANY LIABILITY FOR PERSONAL INJURY OR PROPERTY DAMAGE AS THE RESULT OF PRODUCT INTERRUPTION OR SERVICE TERMINATION CAUSED BY: A) IMPROPER INSTALLATION OR USAGE OTHER THAN AS REQUESTED; B) THE PROTECTION OF NATIONAL OR PUBLIC INTERESTS; C) FORCE MAJEURE; D) YOURSELF OR THE THIRD PARTY, INCLUDING WITHOUT LIMITATION, USING ANY THIRD PARTY'S PRODUCTS, SOFTWARE, APPLICATIONS, AND AMONG OTHERS. REGARDING TO THE PRODUCT WITH INTERNET ACCESS, THE USE OF PRODUCT SHALL BE WHOLLY AT YOUR OWN RISKS. EZVIZ SHALL NOT TAKE ANY RESPONSIBILITIES FOR ABNORMAL OPERATION, PRIVACY LEAKAGE OR OTHER DAMAGES RESULTING FROM CYBER ATTACK, HACKER ATTACK, VIRUS INSPECTION, OR OTHER INTERNET SECURITY RISKS; HOWEVER, EZVIZ WILL PROVIDE TIMELY TECHNICAL SUPPORT IF REQUIRED. SURVEILLANCE LAWS AND DATA PROTECTION LAWS VARY BY JURISDICTION. PLEASE CHECK ALL RELEVANT LAWS IN YOUR JURISDICTION BEFORE USING THIS PRODUCT IN ORDER TO ENSURE THAT YOUR USE CONFORMS TO THE APPLICABLE LAW. EZVIZ SHALL NOT BE LIABLE IN THE EVENT THAT THIS PRODUCT IS USED WITH ILLEGITIMATE PURPOSES.

IN THE EVENT OF ANY CONFLICTS BETWEEN THE ABOVE AND THE APPLICABLE LAW, THE LATTER PREVAILS.

Indholdet i pakken



Kamera



Fod



Skruesæt



Boreskabelon



Strømkabel



Strømadapter

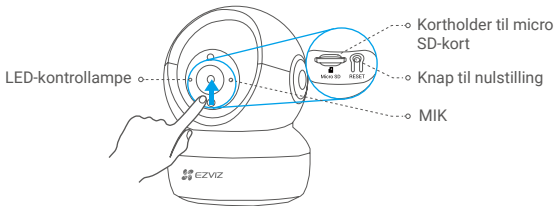


Lovgivningsmæssige
oplysninger



Startvejledning

Grundlæggende oplysninger



Navn

LED-kontrollampe

Micro SD-kort
(sælges separat)

Knap til nulstilling

MIK

Højtaler

Beskrivelse

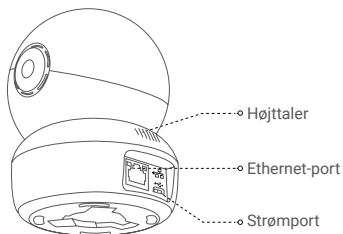
- Lyser konstant rødt: Kameraet starter op.
- Blinker langsomt rødt: Wi-fi-tilslutning mislykkedes.
- Blinker hurtigt rødt: Fejl på kamera (fx fejl på micro SD-kort).
- Blinker hurtigt blå: Kameraet er klar til wi-fi-tilslutning.
- Blinker langsomt blå: Kameraet fungerer korrekt.

Formatér kortet med appen EZVIZ før brug.

Hold knappen inde i 5 sekunder for at genstarte og nulstille alle parametre til standard.

Lydingang.

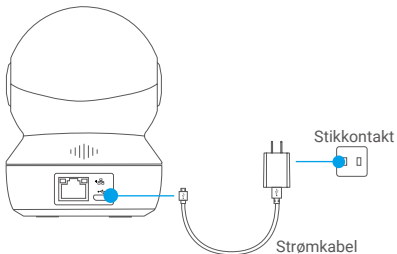
Lydudgang.



Konfiguration

1 Tændt

Sæt strømledningen i kameraet, og sæt derefter strømadapteren i en stikkontakt som vist i figuren nedenfor.



i LED-kontrollampen begynder at blinke hurtigt blå som tegn på, at kameraet er tændt og klar til wi-fi-konfiguration.

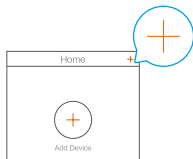
2 Konfiguration af kameraet

1. Opret en brugerkonto

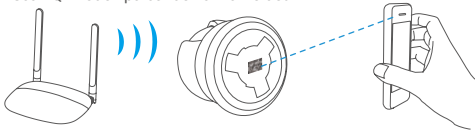
- Forbind din mobiltelefon til wi-fi på **2.4 GHz**-netværket.
- Søg efter "EZVIZ" i App Store eller Google Play (™).
- Hent og installér appen EZVIZ.
- Start appen.
- Opret en EZVIZ-brugerkonto, og registrér dig ved at følge opstartsguiden.

2. Føj et kamera til EZVIZ

- Log ind på din konto med appen EZVIZ.
- Tryk på "+" i øverste højre hjørne af startskærmen for at gå til siden Scan QR-kode.



- Scan QR-koden på bunden af kameraet.



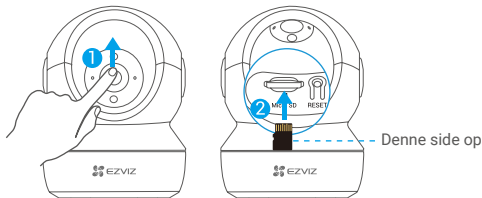
- Følg vejledningen i EZVIZ-appen for at færdiggøre konfiguration af wi-fi.

- i** Hold nulstillingsknappen inde i 5 sekunder i følgende situationer:
 - Kameraet kan ikke oprette forbindelse til wi-fi-netværket.
 - Du vil vælge et andet wi-fi-netværk.

Installation (valgfrit)

1 Isætning af micro SD-kort (valgfrit)

1. Skub kuglen opad, indtil du ser kortstikket.
2. Sæt micro SD-kortet (sælges separat) i kortstikket, som vist på tegningen herunder.



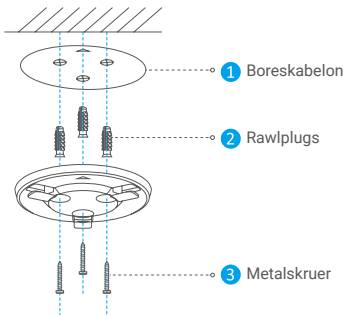
- i** Når micro SD-kortet er sat i, skal du formatere kortet i EZVIZ-appen, før du bruger det.
 3. Gå ind i EZVIZ-appen, og tryk på **Storage Status (Lagerstatus)** på siden enhedsindstillinger for at se status for SD-kortet.
 4. Hvis hukommelseskortet viser status som **Uninitialized (Ikke formateret)**, skal du trykke på status for at formatere kortet.
- i** Status ændres herefter til **Normal**, og kortet kan gemme video og/eller billeder.

2 Installér foden

Kameraet kan placeres vandret eller monteres i loftet. Her gennemgår vi montering i loftet som eksempel.

- 1 • Kontrollér, at loftet er stærkt nok til at bære tre gange kameraets vægt.
- Undgå at placere kameraet i et område, hvor det udsættes for meget lys direkte ind i kameraobjektivet.

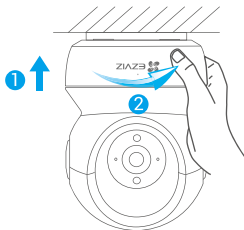
- Placér boreskabelonen på den overflade, hvor du har valgt at montere kameraet.
- (Gælder kun cementmur/-loft) Bor skruenhuller iht. skabelonen, og sæt tre rawplugs i.
- Brug tre metalskruer til at fastgøre kamerafoden i henhold til skabelonen.



- 1 Om nødvendigt kan du rive boreskabelonen af, når du er færdig med installationen.

3 Installér kameraet

Montér kameraet på foden, og drej det med uret, indtil det sidder fast.



- i** Efter installation af kameraet skal du gå ind i EZVIZ-appen og vende kamerabilledet.
- i** Besøg www.ezviz.eu for at få flere oplysninger.