

EN

KO

VN

THAI

ID

繁中



**ezviz™**

# Quick Start Guide



COPYRIGHT © Hangzhou EZVIZ Software Co., Ltd.. ALL RIGHTS RESERVED.

Any and all information, including, among others, wordings, pictures, graphs are the properties of Hangzhou EZVIZ Software Co., Ltd. (hereinafter referred to as "EZVIZ"). This user manual (hereinafter referred to as "the Manual") cannot be reproduced, changed, translated, or distributed, partially or wholly, by any means, without the prior written permission of EZVIZ. Unless otherwise stipulated, EZVIZ does not make any warranties, guarantees or representations, express or implied, regarding to the Manual.


## About this Manual

The Manual includes instructions for using and managing the product. Pictures, charts, images and all other information hereinafter are for description and explanation only. The information contained in the Manual is subject to change, without notice, due to firmware updates or other reasons. Please find the latest version in the **ezviz**™ website (<http://www.evizlife.com>).

## Revision Record

New release – January, 2019

## Trademarks Acknowledgement

**ezviz**™, ™, and other EZVIZ's trademarks and logos are the properties of EZVIZ in various jurisdictions. Other trademarks and logos mentioned below are the properties of their respective owners.

## Legal Disclaimer

TO THE MAXIMUM EXTENT PERMITTED BY APPLICABLE LAW, THE PRODUCT DESCRIBED, WITH ITS HARDWARE, SOFTWARE AND FIRMWARE, IS PROVIDED "AS IS", WITH ALL FAULTS AND ERRORS, AND EZVIZ MAKES NO WARRANTIES, EXPRESS OR IMPLIED, INCLUDING WITHOUT LIMITATION, MERCHANTABILITY, SATISFACTORY QUALITY, FITNESS FOR A PARTICULAR PURPOSE, AND NON-INFRINGEMENT OF THIRD PARTY. IN NO EVENT WILL EZVIZ, ITS DIRECTORS, OFFICERS, EMPLOYEES, OR AGENTS BE LIABLE TO YOU FOR ANY SPECIAL, CONSEQUENTIAL, INCIDENTAL, OR INDIRECT DAMAGES, INCLUDING, AMONG OTHERS, DAMAGES FOR LOSS OF BUSINESS PROFITS, BUSINESS INTERRUPTION, OR LOSS OF DATA OR DOCUMENTATION, IN CONNECTION WITH THE USE OF THIS PRODUCT, EVEN IF EZVIZ HAS BEEN ADVISED OF THE POSSIBILITY OF SUCH DAMAGES.

TO THE MAXIMUM EXTENT PERMITTED BY APPLICABLE LAW, IN NO EVENT SHALL EZVIZ'S TOTAL LIABILITY FOR ALL DAMAGES EXCEED THE ORIGINAL PURCHASE PRICE OF THE PRODUCT.

EZVIZ DOES NOT UNDERTAKE ANY LIABILITY FOR PERSONAL INJURY OR PROPERTY DAMAGE AS THE RESULT OF PRODUCT INTERRUPTION OR SERVICE TERMINATION CAUSED BY: A) IMPROPER INSTALLATION OR USAGE OTHER THAN AS REQUESTED; B) THE PROTECTION OF NATIONAL OR PUBLIC INTERESTS; C) FORCE MAJEURE; D) YOURSELF OR THE THIRD PARTY, INCLUDING WITHOUT LIMITATION, USING ANY THIRD PARTY'S PRODUCTS, SOFTWARE, APPLICATIONS, AND AMONG OTHERS.

REGARDING TO THE PRODUCT WITH INTERNET ACCESS, THE USE OF PRODUCT SHALL BE WHOLLY AT YOUR OWN RISKS. EZVIZ SHALL NOT TAKE ANY RESPONSIBILITIES FOR ABNORMAL OPERATION, PRIVACY LEAKAGE OR OTHER DAMAGES RESULTING FROM CYBER ATTACK, HACKER ATTACK, VIRUS INSPECTION, OR OTHER INTERNET SECURITY RISKS; HOWEVER, EZVIZ WILL PROVIDE TIMELY TECHNICAL SUPPORT IF REQUIRED.

SURVEILLANCE LAWS AND DATA PROTECTION LAWS VARY BY JURISDICTION. PLEASE CHECK ALL RELEVANT LAWS IN YOUR JURISDICTION BEFORE USING THIS PRODUCT IN ORDER TO ENSURE THAT YOUR USE CONFORMS TO THE APPLICABLE LAW. EZVIZ SHALL NOT BE LIABLE IN THE EVENT THAT THIS PRODUCT IS USED WITH ILLEGITIMATE PURPOSES.

IN THE EVENT OF ANY CONFLICTS BETWEEN THE ABOVE AND THE APPLICABLE LAW, THE LATTER PREVAILS.

## Regulatory Information

### FCC Information

This device complies with Part 15 of the FCC Rules. Operation is subject to the following two conditions:

- (1) This device may not cause harmful interference, and
- (2) This device must accept any interference received, including interference that may cause undesired operation.

Note: This product has been tested and found to comply with the limits for a Class B digital device, pursuant to Part 15 of the FCC Rules. These limits are designed to provide reasonable protection against harmful interference in a residential installation. This product generates, uses, and can radiate radio frequency energy and, if not installed and used in accordance with the instructions, may cause harmful interference to radio communications. However, there is no guarantee that interference will not occur in a particular installation. If this product does cause harmful interference to radio or television reception, which can be determined by turning the equipment off and on, the user is encouraged to try to correct the interference by one or more of the following measures:

- Reorient or relocate the receiving antenna.
- Increase the separation between the equipment and receiver.
- Connect the equipment into an outlet on a circuit different from that to which the receiver is connected.
- Consult the dealer or an experienced radio/TV technician for help.

Please take attention that changes or modification not expressly approved by the party responsible for compliance could void the user's authority to operate the equipment.

This equipment should be installed and operated with a minimum distance 20cm between the radiator and your body.

This device complies with Industry Canada licence-exempt RSS standard(s). Operation is subject to the following two conditions:

- (1) this device may not cause interference, and
- (2) this device must accept any interference, including interference that may cause undesired operation of the device.

Under Industry Canada regulations, this radio transmitter may only operate using an antenna of a type and maximum (or lesser) gain approved for the transmitter by Industry Canada. To reduce potential radio interference to other users, the antenna type and its gain should be so chosen that the equivalent isotropically radiated power (e.i.r.p.) is not more than that necessary for successful communication.



#### EU Conformity Statement

This product and - if applicable - the supplied accessories too are marked with "CE" and comply therefore with the applicable harmonized European standards listed under the Radio Equipment Directive 2014/53/EU, the EMC Directive 2014/30/EU, the RoHS Directive 2011/65/EU.



2012/19/EU (WEEE directive): Products marked with this symbol cannot be disposed of as unsorted municipal waste in the European Union. For proper recycling, return this product to your local supplier upon the purchase of equivalent new equipment, or dispose of it at designated collection points. For more information see: [www.recyclethis.info](http://www.recyclethis.info).



2006/66/EC and its amendment 2013/56/EU (battery directive): This product contains a battery that cannot be disposed of as unsorted municipal waste in the European Union. See the product documentation for specific battery information. The battery is marked with this symbol, which may include lettering to indicate cadmium (Cd), lead (Pb), or mercury (Hg). For proper recycling, return the battery to your supplier or to a designated collection point. For more information see: [www.recyclethis.info](http://www.recyclethis.info).

## EC DECLARATION OF CONFORMITY

Hereby, Hangzhou EZVIZ Software Co.,Ltd. declares that the radio equipment type [CS-X5S-16H] is in compliance with Directive 2014/53/EU.

The full text of the EC DECLARATION OF CONFORMITY is available at the following web link:

<http://www.ezvizlife.com/declaration-of-conformity>.

## Safety Instruction

**Due to the product shape and dimension, the name and address of the importer/manufacturer are printed on the package.**

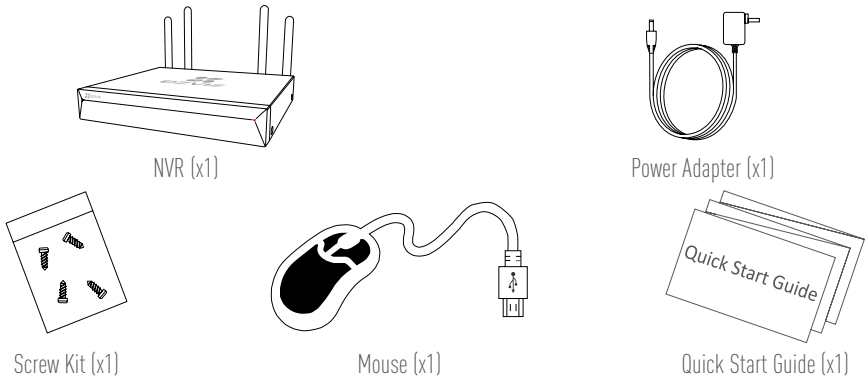
## Customer Service

**For more information, please visit [www.ezvizlife.com](http://www.ezvizlife.com).**

**Need help? Please visit "[www.ezvizlife.com/inter/page/contact-us](http://www.ezvizlife.com/inter/page/contact-us)" for our local contact details.**

**SAVE THIS MANUAL FOR FUTURE REFERENCE**

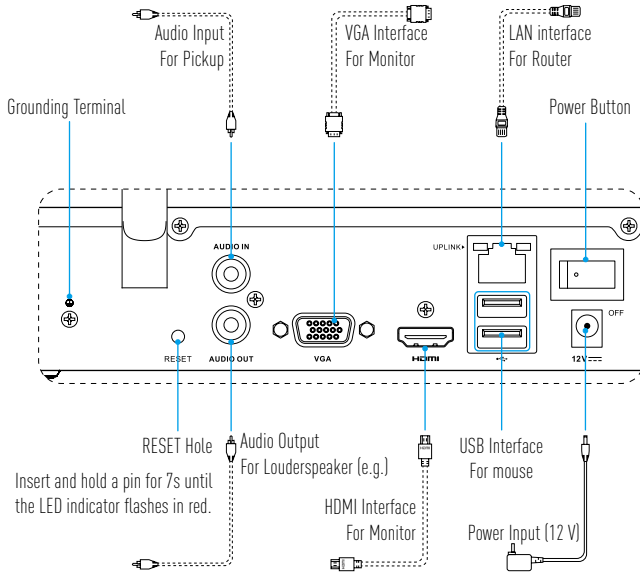
## Box Contents



**i** For models equipped with HDD (Hard Disk Drive), the screw kit is not included.

## Product View

### Rear Panel Overview

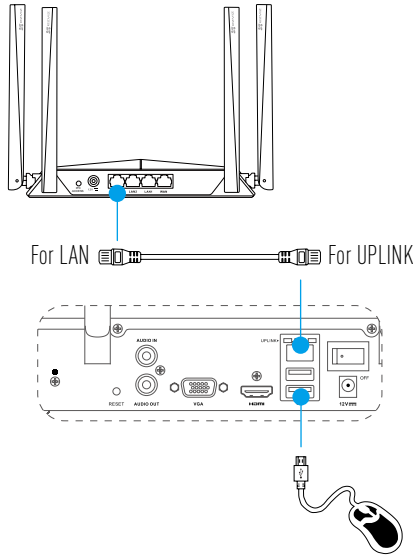


**i** The cables with dotted lines above are not included.

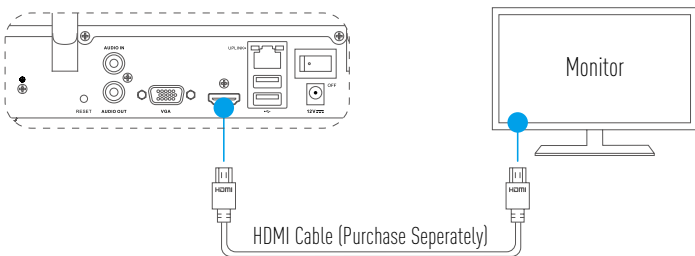
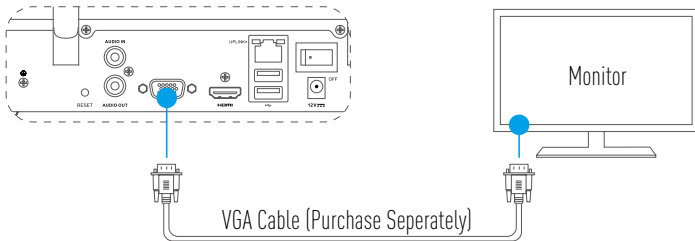
# Wiring

**i** If you want to install HDD by yourself, refer to [Appendix](#).

1. Connect the LAN interface of NVR to that of router using network cable (suggested).
2. Connect the mouse to the USB interface of NVR.



3. Connect NVR to the Monitor using VGA or HDMI cable.

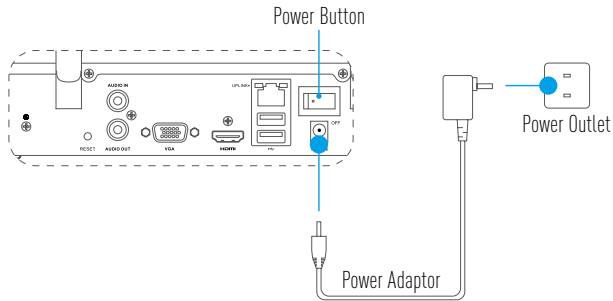


**i** Choose the corresponding signal source of the Monitor according to different connections.

# Setup

## Power on

1. Connect NVR with power outlet and turn on the power button.



- i* Use stable power supply to avoid device exception or even damage.
2. Wait until the Wizard interface appears on the Monitor and set the password (For the first time access).
  - i* It is recommended to set new password for better security.
3. Log in the NVR.
  - i*
    - Admin password is the verification code on the table of the device.
    - If the wizard does not appear, please check the steps above.

## (Optional) Shutdown

1. In the operation interface of NVR (Monitor), go to **Shutdown** by **Menu → Shutdown** and click it.
2. Click **Yes**.
  - i* For device protection, do not turn off or disconnect the power supply while the device is working.

# Linkage

## Link through Monitor

- i** • Make sure that the camera and device are using the same network, wired or wireless.
- The wireless camera in its initial state can be added to the device's Wi-Fi network by the following steps.

Power on all devices before you start.

- i** • Reset the camera if it has been connected to Wi-Fi before.
- The camera and device should be within the distance of up to 10 m (32.8 feet). Stay away from wireless device or barriers to avoid signal decreasing.

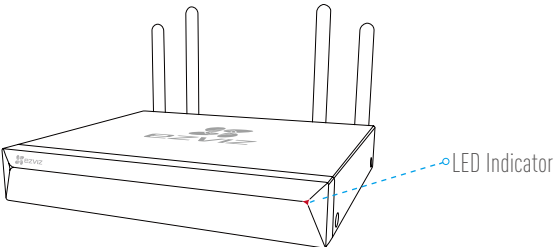


1. Go to **Camera Management** by **Menu → Camera**.



2. When camera is ready to connect Wi-Fi, click **Search**.
3. Click "+" to add linked camera.
  - i** The camera will automatically connect to the device.

## LED Indicator Status



### LED Indicator Status

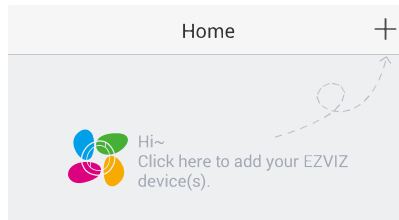
Steady Green	Working Properly
Steady Red	Device Exceptions or Alarm
Flashing Red	Restore Factory Defaults



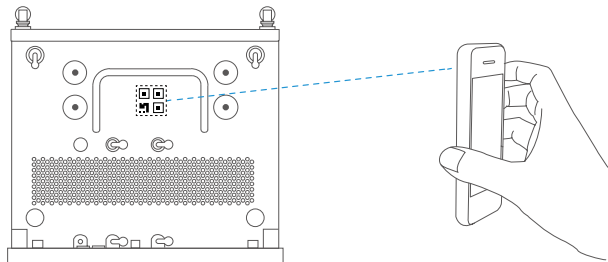
## Link to EZVIZ APP

 You can add your device to EZVIZ app for more functions.

1. Download the App in your Phone (Optional).
  - Search for "EZVIZ" in the App Store/Google Play™ to download and install the app.
  - Launch the App.
  - Register an EZVIZ user account.
2. Add the NVR.
  - Log into the EZVIZ App.
  - Click "+" on the upper-right corner to go to QR code scanning interface.



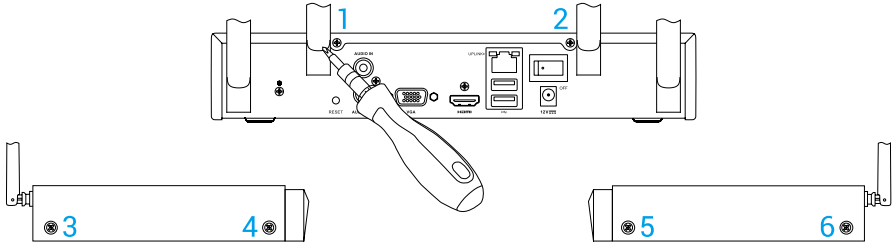
- Scan the QR Code at the bottom to add the device.



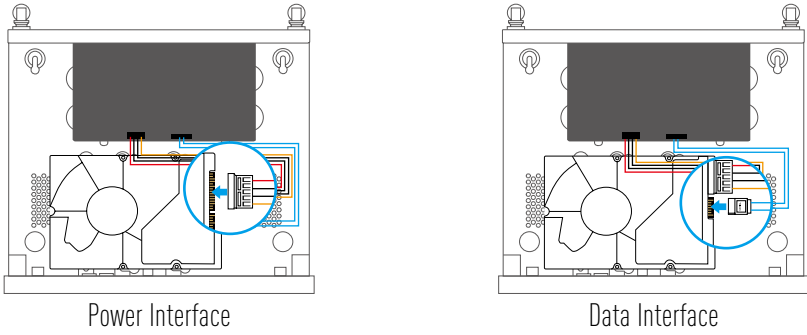
# Appendix

## HDD Installation

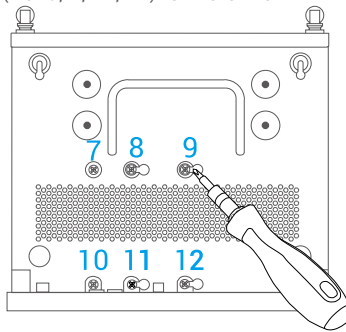
1. Loosen six screws No.1 to 6 on the back and both sides of the device to take apart the cover.



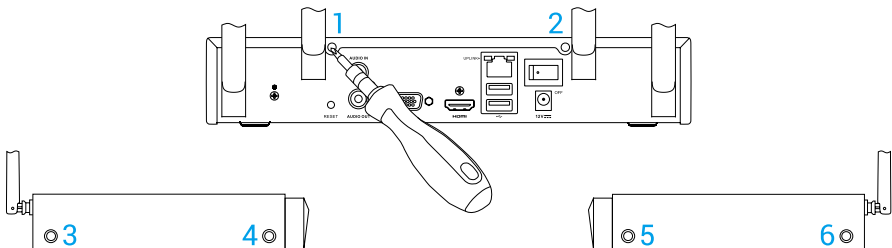
2. Connect the data cable and power cable of NVR with HDD respectively.



3. Use screws (No. 7, 9, 10, 12) or (No. 8, 9, 11, 12) to fixate the HDD.

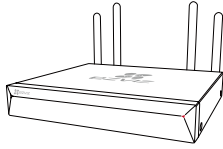


4. Re-assemble the NVR with screws (No.1 to No. 6).

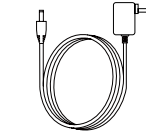


# 기본 정보

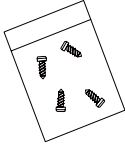
## 박스 내용물



NVR (x1)



전원 어댑터 (x1)



나사 세트(x1)



마우스 (x1)

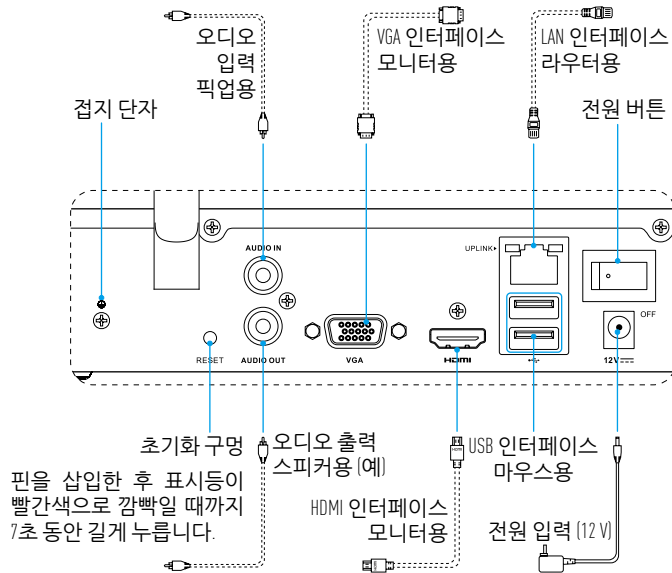


빠른 시작 가이드(x1)

**i** HDD(하드 디스크 드라이브)가 장착된 모델에는 나사 세트가 포함되어 있지 않습니다.

## 제품 보기

### 뒷면 개요

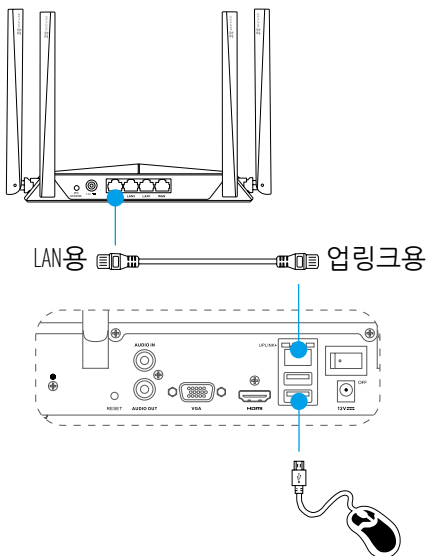


**i** 위의 점선에 해당하는 케이블은 포함되지 않습니다.

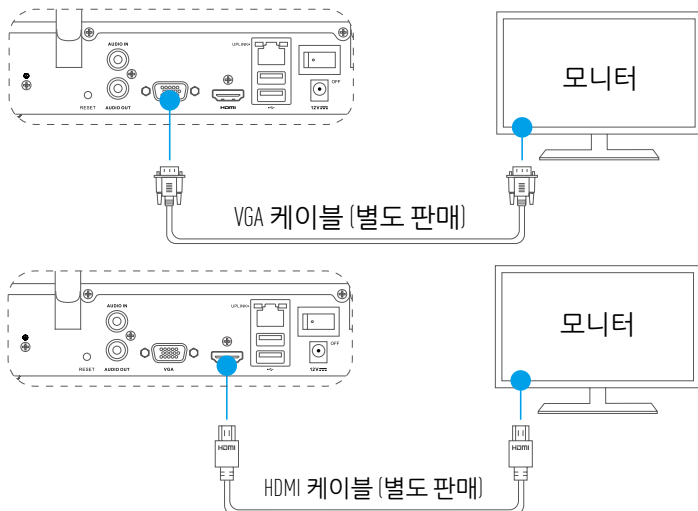
# 배선

**i** HDD를 직접 설치하고 싶으시면 **부록**을 참조하십시오.

1. 네트워크 케이블을 사용하여 NVR의 LAN 인터페이스를 라우터의 LAN 인터페이스에 연결하십시오(권장).
2. 마우스를 NVR의 USB 인터페이스에 연결하십시오.



3. VGA 또는 HDMI 케이블을 사용하여 NVR을 모니터에 연결하십시오.

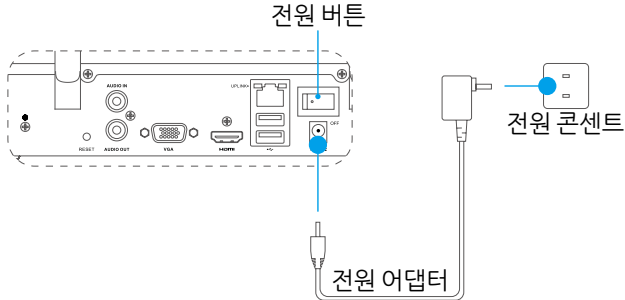


**i** 모니터에서 연결 케이블에 해당하는 신호 소스를 선택하십시오.

# 설정

## 전원 켜기

1. NVR을 전원 콘센트에 연결하고 전원 버튼을 켜십시오.



- i** 장치가 비정상적으로 되거나 장치에 심한 손상이 가는 것을 방지하려면 안정적인 전원 장치를 사용하십시오.
2. 마법사 인터페이스가 모니터에 나타날 때까지 기다리고 비밀번호(최초 접속용)를 설정하십시오.
  - i** 더 나은 보안을 위해 새로운 비밀번호를 설정하길 권장합니다.
3. NVR에 로그인하십시오.
  - i** • 관리자 비밀번호는 장비의 라벨에 있는 인증 코드입니다.
  - 마법사가 나타나지 않으면 위의 단계를 확인해 주십시오.

## (선택사항) 종료

1. NVR(모니터)의 조작 인터페이스에서 Menu(메뉴) → Shutdown(종료)의 Shutdown(종료)으로 가서 클릭하십시오.
2. Yes(예)를 클릭하십시오.
  - i** 장비를 보호하기 위해 장비가 작동하는 동안에는 전원을 끄거나 전원 공급 장치의 연결을 해제하지 마십시오.

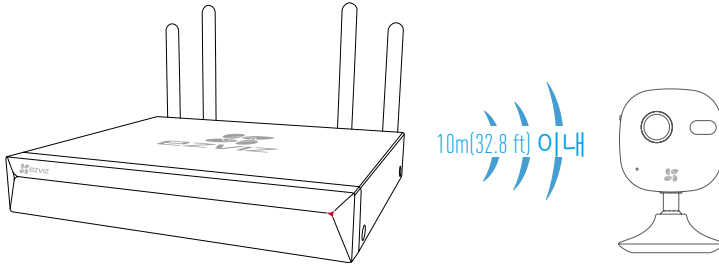
# 연결

## 모니터를 통한 연결

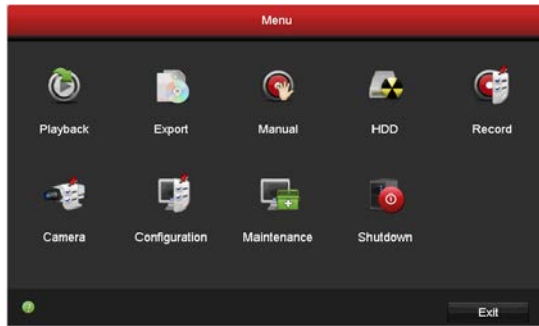
- 카메라 및 장비가 동일한 유선 또는 무선 네트워크를 사용하고 있는지 확인하십시오.
- i** • 초기화 상태에 있는 무선 카메라는 다음과 같은 단계를 따라 장비의 Wi-Fi 네트워크에 추가할 수 있습니다.

시작하기 전에 모든 기기의 전원을 켭니다.

- 이전에 Wi-Fi에 연결했었다면 카메라를 재설정하십시오.
- i** • 카메라와 장비의 거리는 최대 10m(32.8피트) 이내이어야 합니다. 신호가 약해지지 않도록 하려면 무선 장비 또는 장애물을 피하십시오.

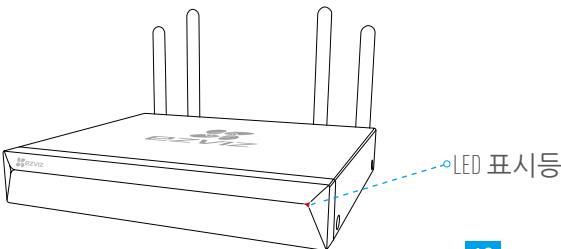


1. Menu (메뉴) → Camera(카메라)를 거쳐 Camera Management(카메라 관리) 로 이동합니다.



2. 카메라가 Wi-Fi를 연결할 준비가 되면, Search(검색)를 클릭합니다.
3. "+"를 클릭하여 연결된 카메라를 추가합니다.
  - i** 카메라는 장비에 자동으로 연결됩니다.

## LED 표시기 상태



## LED 표시기 상태

녹색 상시 점등	정상 작동 중
빨간색 점등	장비 비정상 또는 알람
빨간색 깜빡임	공장 기본값으로 복원

## EZVIZ 앱에 연결하기

KO

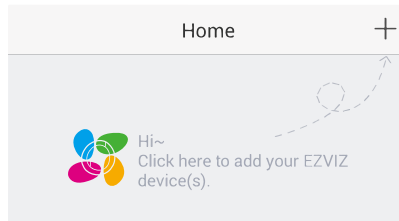
**i** 더 많은 기능을 사용하기 위해 장비를 EZVIZ 앱에 추가할 수 있습니다.

### 1. 스마트폰에서 앱을 다운로드하십시오(선택사항).

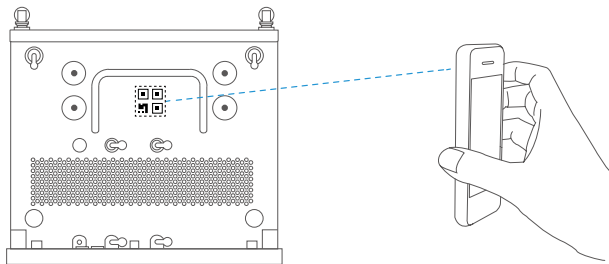
- 앱을 다운로드하고 설치하려면 앱 스토어/구글 플레이™에서 “EZVIZ”를 검색하십시오.
- 앱을 실행합니다.
- EZVIZ 사용자 계정을 등록하십시오.

### 2. NVR을 추가하십시오.

- EZVIZ 앱에 로그인합니다.
- 오른쪽 상단 구석의 “+”를 클릭하여 QR 코드를 스캔하는 인터페이스로 가십시오.



- 장비를 추가하려면 바닥에 있는 QR 코드를 스캔하십시오.

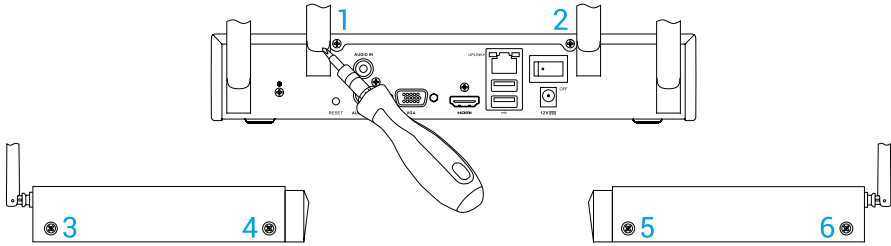


**i** 이 기기는 가정용으로 전자파적합등록을 한 기기로서 주거지역은 물론 모든 지역에서 사용할 수 있습니다. 위와 같은 무선설비는 전파혼선의 가능성이 있으므로 인명안전과 관련된 서비스는 할 수 없습니다.

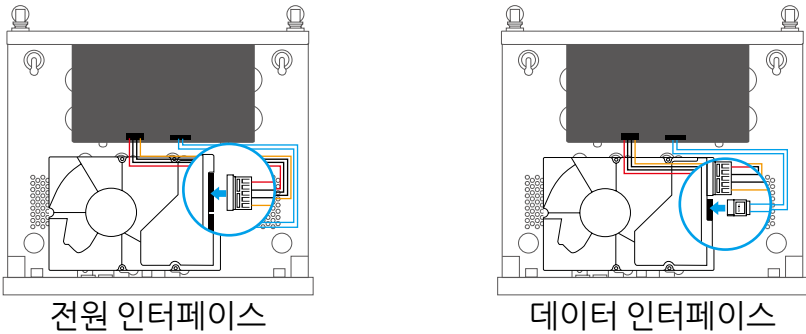
# 부록

## HDD 설치

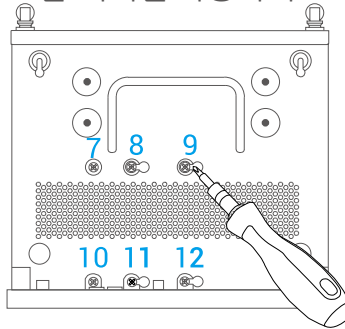
1. 장비의 뒷면과 양쪽 옆면에서 1번부터 6번까지 6개의 나사를 풀어 커버를 분리하십시오.



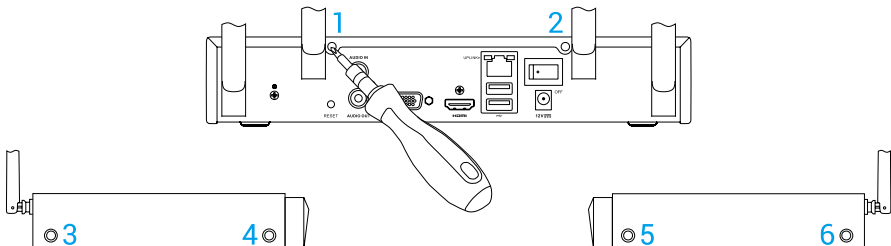
2. NVR의 데이터 케이블과 전원 케이블을 HDD에 각각 연결하십시오.



3. (7, 9, 10, 12번) 또는 (8, 9, 11, 12번) 나사를 사용하여 HDD를 고정시킵니다.



4. 나사(1번~6번)로 NVR을 다시 조립하십시오.

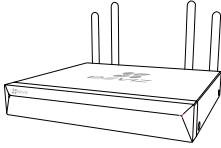




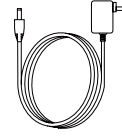
# Thông tin cơ bản

## Linh kiện trong hộp đựng

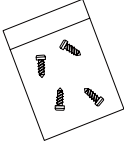
VN



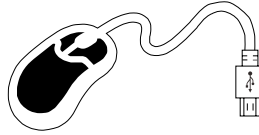
NVR (x1)



Bộ chuyển đổi điện (x1)



Bộ vít nở (x1)



Chuột (x1)

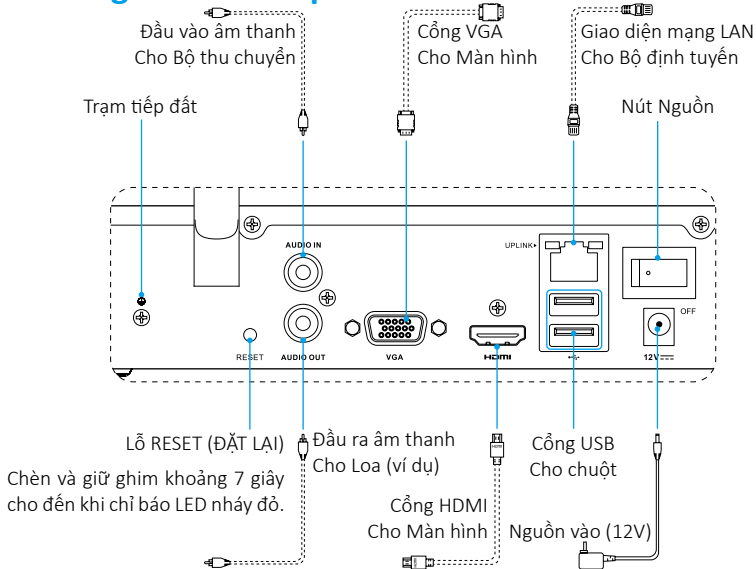


Hướng dẫn sử dụng nhanh (x1)

**i** Đối với các mẫu máy được trang bị HDD (Ổ Đĩa Cứng), sẽ không bán kèm bộ vít nở này.

## Xem Sản phẩm

### Khái quát bảng điều khiển phía sau

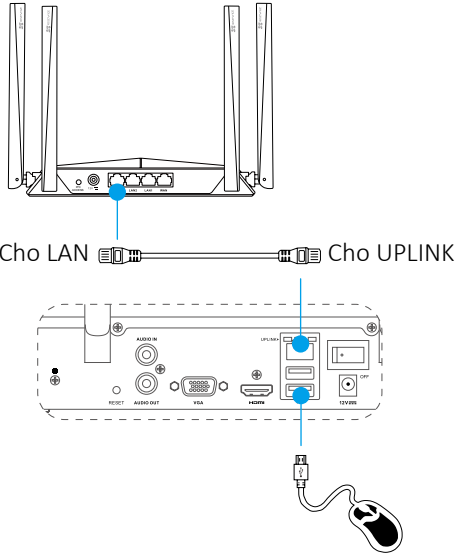


**i** Các dây cáp được minh họa bằng đường vạch đứt trong hình trên sẽ không được cấp kèm.

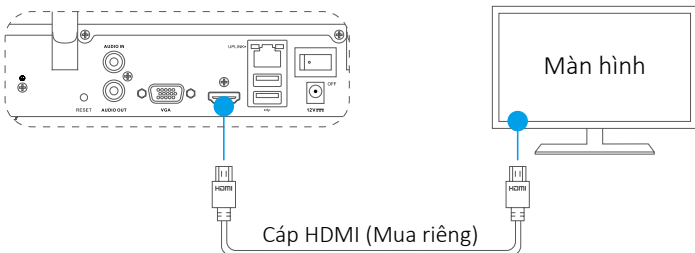
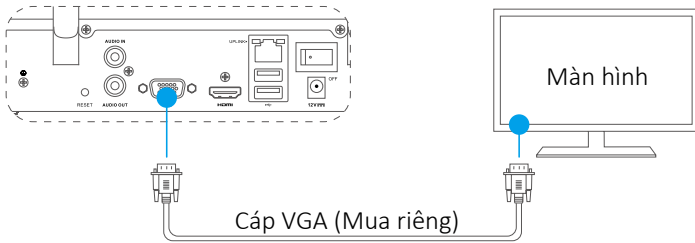
# Đi dây

**i** Nếu bạn muốn tự cài đặt HDD, hãy tham khảo [Phụ lục](#).

1. Kết nối giao diện mạng LAN của NVR vào giao diện mạng LAN của bộ định tuyến bằng cáp mạng (khuyến dùng).
2. Kết nối chuột với cổng USB của NVR.



3. Kết nối NVR với Màn hình bằng cáp VGA hoặc HDMI.

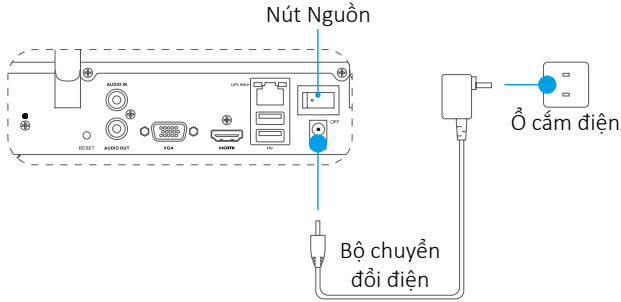


**i** Chọn nguồn tín hiệu tương ứng của Màn hình theo các kết nối khác nhau.

# Đặt

## Bật nguồn

1. Kết nối NVR với ổ cắm nguồn điện và bật nút nguồn điện.



VN

- i* Sử dụng nguồn điện ổn định để tránh thiết bị ngoại lệ hoặc thậm chí hỏng hóc.
2. Đợi cho đến khi giao diện Trình hướng dẫn xuất hiện trên Màn hình và đặt mật khẩu (Dành cho lần truy cập đầu tiên).
  - i* Khuyến nghị đặt mật khẩu mới nhằm tăng cường bảo mật tốt hơn.
3. Đăng nhập NVR.
  - i* • Mật khẩu quản trị viên là mã xác thực trên nhãn của thiết bị.
  - Nếu Trình hướng dẫn cài đặt không xuất hiện, hãy kiểm tra các bước trên.

## Tắt (tùy chọn)

1. Ở giao diện vận hành NVR (Màn hình), đi đến **Shutdown (Tắt)** bằng **Menu** → **Shutdown (Tắt)** và nhấp vào.
2. Nhấp vào **Yes (Có)**.
  - i* Để bảo vệ thiết bị, không tắt hoặc ngắt kết nối nguồn điện khi thiết bị đang hoạt động.

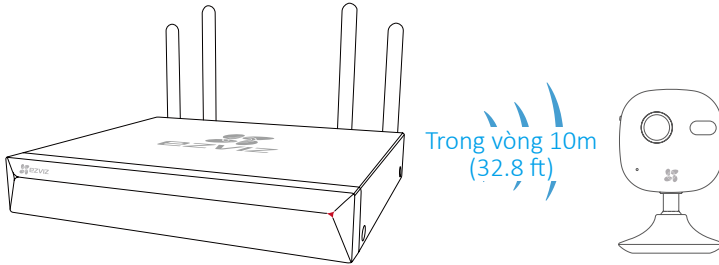
# Kết nối

## Kết nối qua Màn hình

- Hãy chắc rằng camera và thiết bị đang sử dụng cùng một mạng, có dây hoặc không dây.
- Camera không dây ở trạng thái ban đầu có thể được thêm vào mạng Wi-Fi của thiết bị bằng các bước sau.

Bật tất cả các thiết bị trước khi bắt đầu.

- Đặt lại camera nếu nó đã được kết nối với Wi-Fi trước đó.
- Camera và thiết bị phải ở trong một phạm vi lên đến 10 m (32,8 feet). Tránh xa thiết bị không dây hoặc các rào chắn để tránh suy giảm tín hiệu.

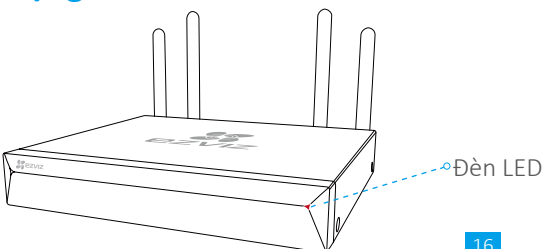


1. Truy cập phần **Camera Management (Quản lý Camera)** trong **Menu** → **Camera**.



2. Khi camera đã được kết nối Wi-Fi, bấm vào nút **Search (Tìm kiếm)**.
3. Bấm vào hình dấu "+" để thêm camera được liên kết.
  - Camera sẽ tự động kết nối với thiết bị.

## Trạng thái Đèn báo LED



## Trạng thái Đèn báo LED

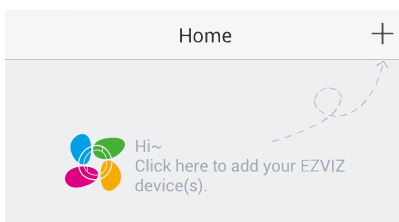
Xanh lá ổn định	Hoạt động bình thường
Màu đỏ ổn định	Thiết bị ngoại lệ hoặc Báo động
Nháy đỏ	Khôi phục các giá trị mặc định tại nhà máy

## Liên kết với ỨNG DỤNG EZVIZ

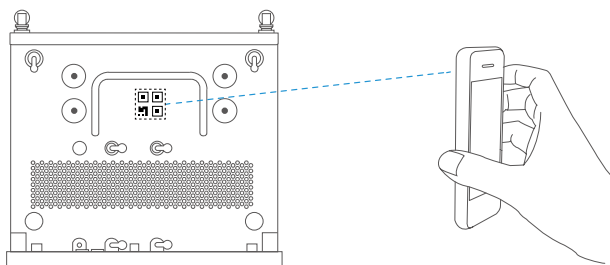
**i** Bạn có thể thêm thiết bị vào ứng dụng EZVIZ để bổ sung các chức năng khác.

VN

1. Tải xuống Ứng dụng trên Điện thoại của bạn (Tùy chọn).
  - Tìm kiếm "EZVIZ" trong App Store/Google Play™ để tải về và cài đặt ứng dụng.
  - Khởi chạy ứng dụng.
  - Đăng ký một tài khoản người dùng EZVIZ.
2. Thêm NVR.
  - Đăng nhập vào ứng dụng EZVIZ.
  - Nhấp vào "+" ở góc trên bên phải để đi đến giao diện quét mã QR.



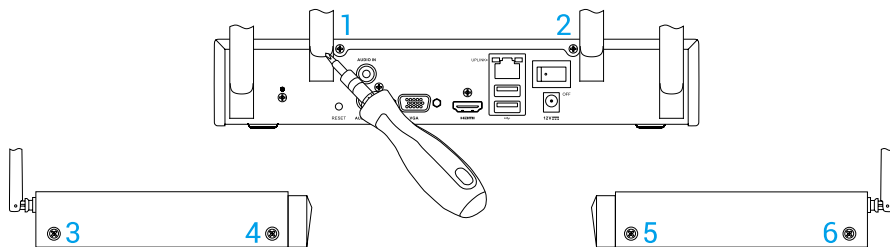
- Quét mã QR ở phần cuối cùng để thêm thiết bị.



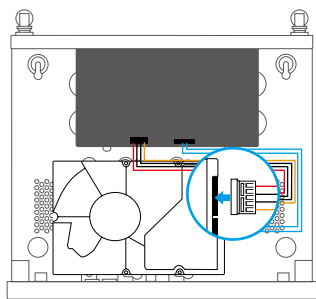
# Phụ lục

## Lắp đặt HDD

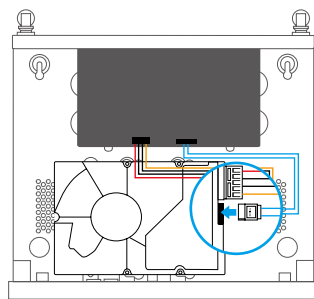
1. Nới lỏng sáu vít từ Số 1 đến 6 ở phía sau và hai bên thiết bị để tách vỏ ra.



2. Kết nối cáp dữ liệu và cáp nguồn của HDD tương ứng.

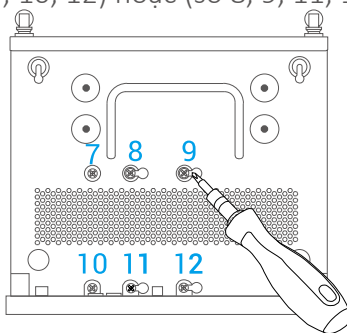


Cổng nguồn điện

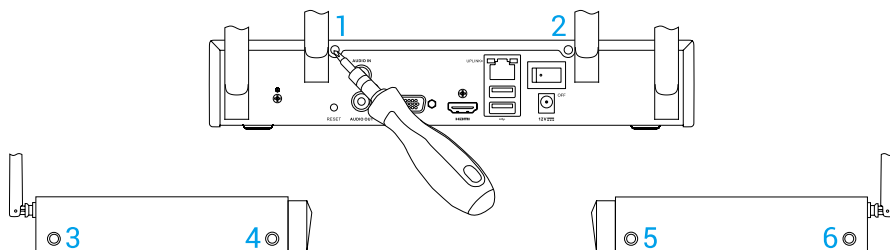


Cổng dữ liệu

3. Sử dụng các vít (số 7, 9, 10, 12) hoặc (số 8, 9, 11, 12) để cố định HDD.

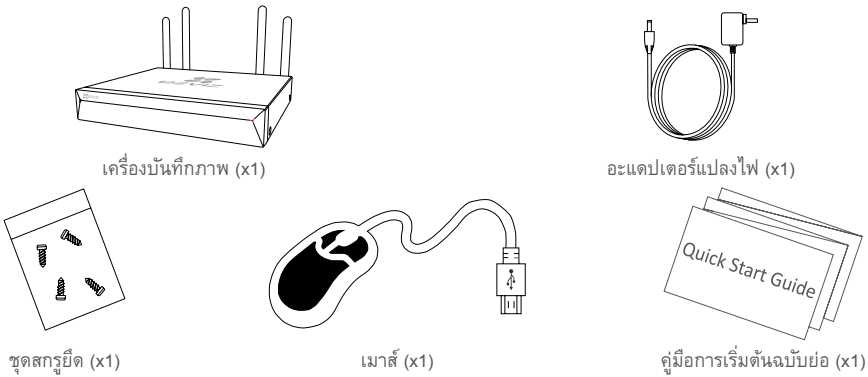


4. Lắp lại NVR bằng các vít (Số 1 đến Số 6).



# ข้อมูลพื้นฐาน

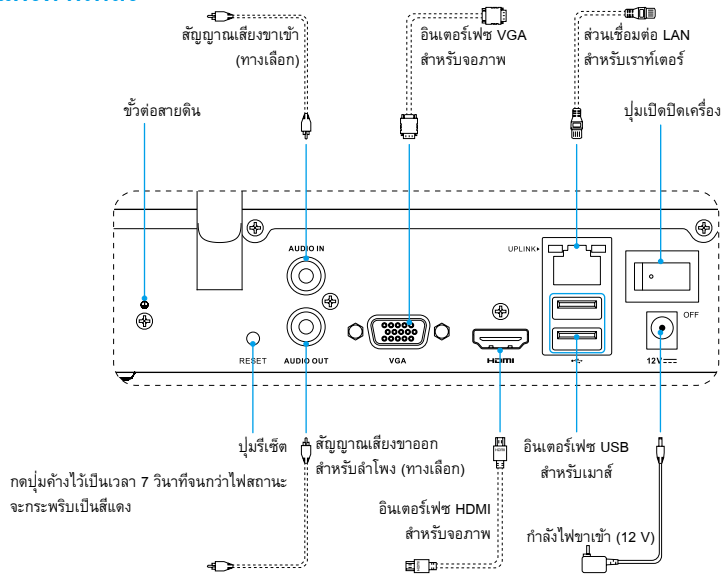
## รายการสิ่งของในกล่อง



THAI

**i** สำหรับรุ่นที่ติดตั้งพร้อม ฮาร์ดดิสก์ จะไม่มีชุดสกรูยึดให้มา

## มุมมองผลิตภัณฑ์ ภาพรวมแผงด้านหลัง

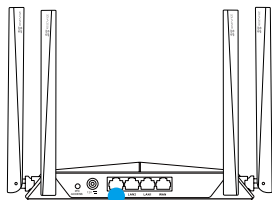



**i** สายเคเบิลที่มีเส้นประด้านบนไม่ได้รวมอยู่ด้วย

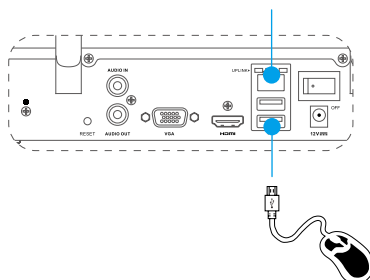
# การเชื่อมต่อสาย

**i** ถ้าคุณต้องการติดตั้ง ฮาร์ดดิสก์ ด้วยตัวเอง ให้ดูที่ภาคผนวก

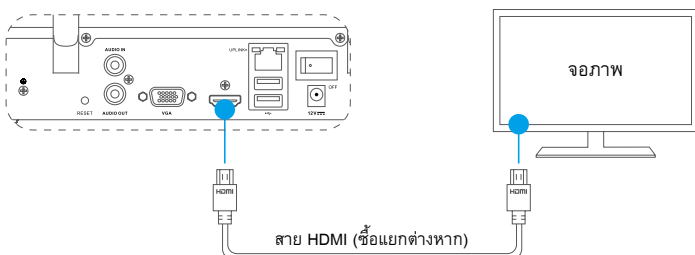
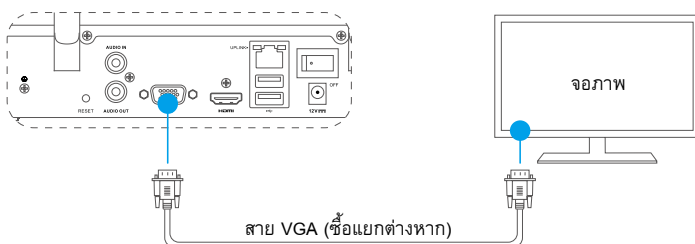
1. เชื่อมต่ออินเทอร์เน็ต LAN ของ เครื่องบันทึกภาพ เข้ากับอินเทอร์เน็ตของเราเตอร์โดยใช้สายแลน (แนะนำ)
2. เชื่อมต่อเมาส์เข้ากับอินเทอร์เน็ต USB ของ เครื่องบันทึกภาพ



สำหรับ LAN  สำหรับเชื่อมต่อกับเราเตอร์



3. เชื่อมต่อ เครื่องบันทึกภาพ เข้ากับจอภาพโดยใช้สาย VGA หรือ HDMI



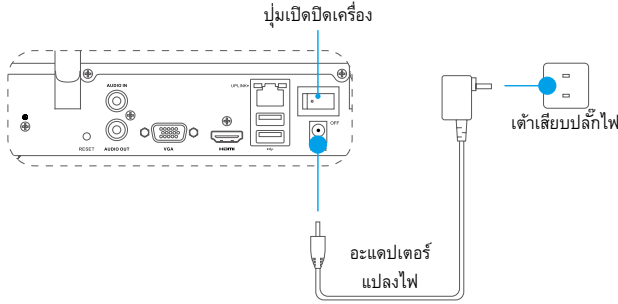
**i** เลือกแหล่งกำเนิดสัญญาณที่เหมาะสมกับจอภาพตามการเชื่อมต่อประเภทต่างๆ



# การตั้งค่า

## เปิดเครื่อง

1. เชื่อมต่อ เครื่องบันทึกภาพ เข้ากับเต้าเสียบไฟฟ้าและเปิดสวิตช์อุปกรณ์



THAI

- i** ใช้แหล่งจ่ายไฟที่เสถียรเพื่อหลีกเลี่ยงการเกิดข้อผิดพลาดของอุปกรณ์หรือแม้แต่ความเสียหายใดๆ
2. รอจนกว่าอินเทอร์เน็ตเฟชของตัวช่วยจะปรากฏขึ้นบนจอภาพ แล้วตั้งรหัสผ่าน (สำหรับการเข้าถึงครั้งแรก)
  - i** ขอแนะนำให้ตั้งรหัสผ่านใหม่เพื่อให้มีความปลอดภัยมากขึ้น
3. เข้าสู่ระบบ ของเครื่องบันทึกภาพ
  - i** • รหัสผ่านผู้ดูแลระบบคือรหัสยืนยันที่อยู่บนฉลากของอุปกรณ์
  - ถ้าตัวช่วยไม่ปรากฏขึ้น โปรดตรวจสอบตามขั้นตอนข้างต้น

## การปิดเครื่อง (ตัวเลือก)

1. ในอินเทอร์เน็ตเฟชการทำงานของ เครื่องบันทึกภาพ ให้ไปที่ **Shutdown (ปิดเครื่อง)** โดยใช้ **Menu (เมนู) → Shutdown (ปิดเครื่อง)** แล้วคลิกที่รายการ
2. คลิกที่ **Yes (ใช่)**
  - i** เพื่อเป็นการป้องกันอุปกรณ์ อย่าปิดหรือตัดการจ่ายไฟในขณะที่อุปกรณ์กำลังทำงาน

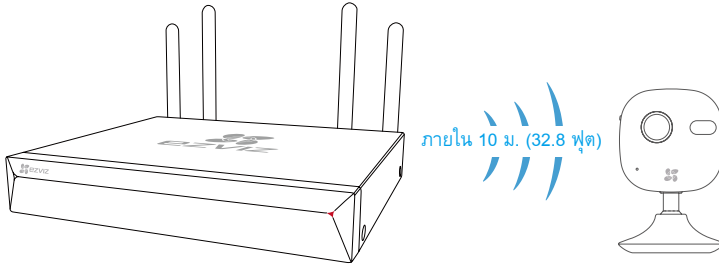
# การเชื่อมโยง

## เชื่อมโยงผ่านจอภาพ

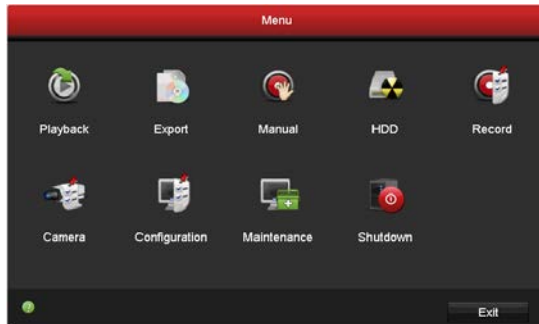
- i ตรวจสอบว่ากล้องและอุปกรณ์ใช้เครือข่ายเดียวกัน ไม่ว่าจะเป็นแบบใช้สายหรือไร้สาย
- สามารถเพิ่มกล้องระบบไร้สายที่อยู่ในสถานะเริ่มต้นไปยังเครือข่าย Wi-Fi ของอุปกรณ์ได้ด้วยขั้นตอนต่อไปนี้

เปิดสวิตช์อุปกรณ์ทั้งหมดก่อนที่จะเริ่มต้น

- i ให้รีเซ็ตกล้องถ้าถูกเชื่อมต่อกับเครือข่าย Wi-Fi อื่นมาก่อน
- กล้องและอุปกรณ์จะต้องอยู่ภายในระยะห่างไม่เกิน 10 ม. (32.8 ฟุต) วางให้ห่างจากอุปกรณ์ระบบไร้สายอื่นๆ หรือสิ่งกีดขวาง เพื่อเป็นการป้องกันมิให้ความเข้มสัญญาณลดลง



- ไปที่ **Camera Management (การจัดการกล้อง)** โดย **Menu (เมนู)** → **Camera (กล้อง)**

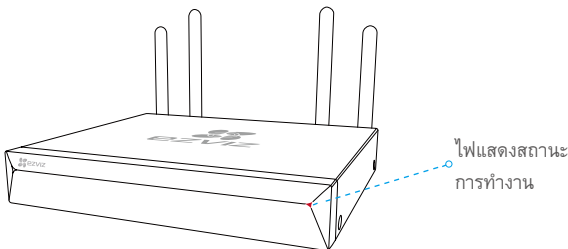


- เมื่อกล้องพร้อมที่จะเชื่อมต่อ Wi-Fi ให้คลิกที่ **Search (ค้นหา)**

- คลิก **"+"** เพื่อเพิ่มกล้องที่ถูกเชื่อมโยง

- i กล้องจะเชื่อมต่อกับอุปกรณ์โดยอัตโนมัติ

## สถานะของไฟ LED



### สถานะของไฟ LED

สัญญาณไฟสีเขียวคงที่	ทำงานตามปกติ
สีแดงคงที่	มีข้อผิดพลาดหรือสัญญาณเตือนของอุปกรณ์
สีแดงกะพริบ	เรียกคืนการตั้งค่าจากโรงงาน

## เชื่อมโยงไปที่แอป EZVIZ

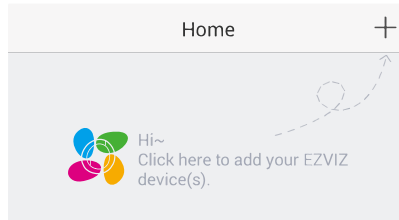
1. คุณสามารถเพิ่มอุปกรณ์ของคุณไปที่แอป EZVIZ เพื่อรับฟังก์ชันการทำงานเพิ่มเติม

### 1. ดาวน์โหลดแอปในโทรศัพท์ของคุณ (เพิ่มเติม)

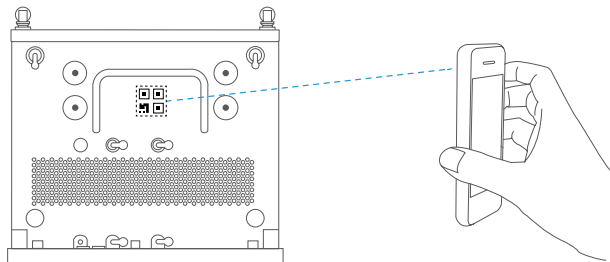
- ค้นหา "EZVIZ" ใน App Store/Google Play™ เพื่อดาวน์โหลดและติดตั้งแอป
- เปิดใช้งานแอป
- ลงทะเบียนบัญชีผู้ใช้ EZVIZ

### 2. เพิ่ม อุปกรณ์

- เข้าสู่แอป EZVIZ
- คลิก "+" ที่มุมบนขวาเพื่อไปยังอินเตอร์เฟซการสแกนรหัส คิวอาร์



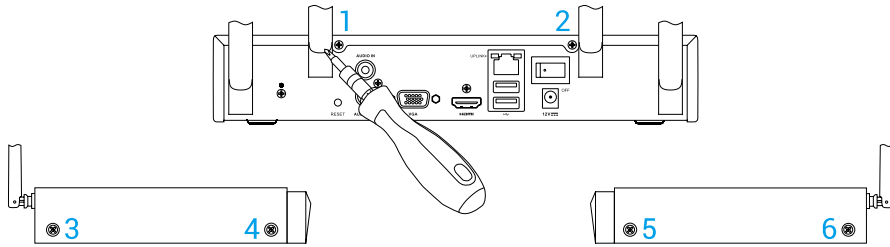
- สแกนรหัส คิวอาร์ ที่ด้านล่างเพื่อเพิ่มอุปกรณ์



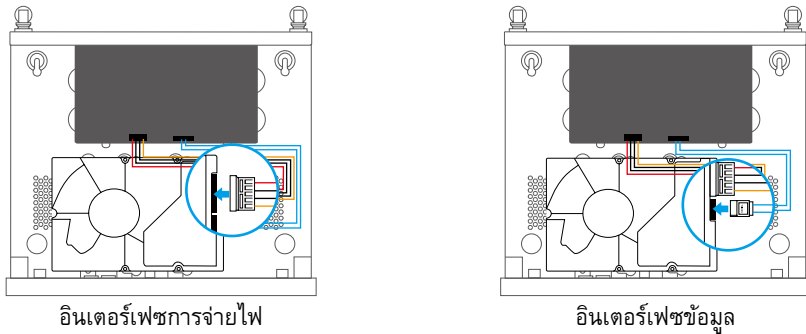
# ภาคผนวก

## การติดตั้ง ฮาร์ดดิสก์

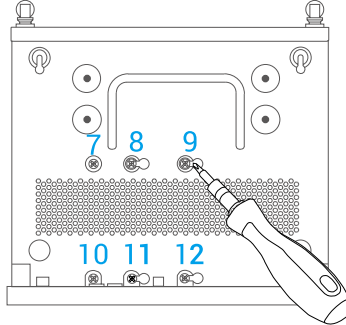
1. คลายสกรูยึด 6 ตัวหมายเลข 1 ถึง 6 ที่ด้านหลังและทั้งสองด้านของอุปกรณ์เพื่อแยกฝาครอบออก



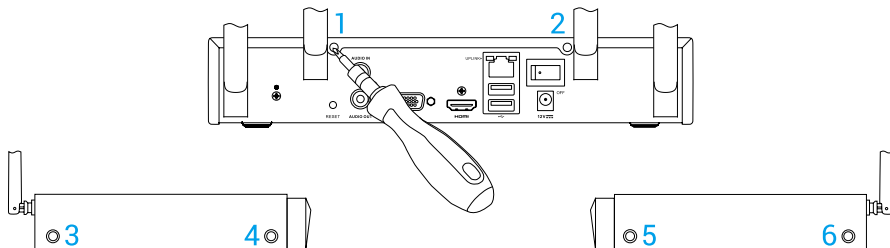
2. ต่อสายข้อมูลและสายไฟของ เครื่องบันทึกภาพ เข้ากับ ฮาร์ดดิสก์ ตามลำดับ



3. ใช้สกรู (หมายเลข 7, 9, 10, 12) หรือ (หมายเลข 8, 9, 11, 12) เพื่อยึด ฮาร์ดดิสก์

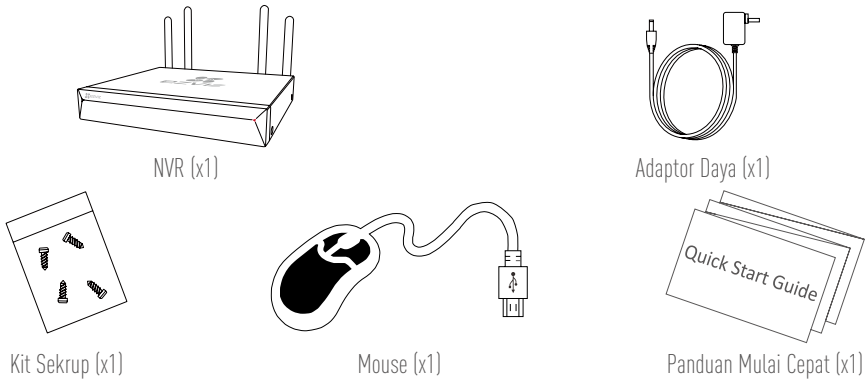


4. ประกอบ ฝาครอบ กลับคืนโดยใช้สกรู (หมายเลข 1 ถึง 6)



# Informasi Dasar

## Isi Kotak

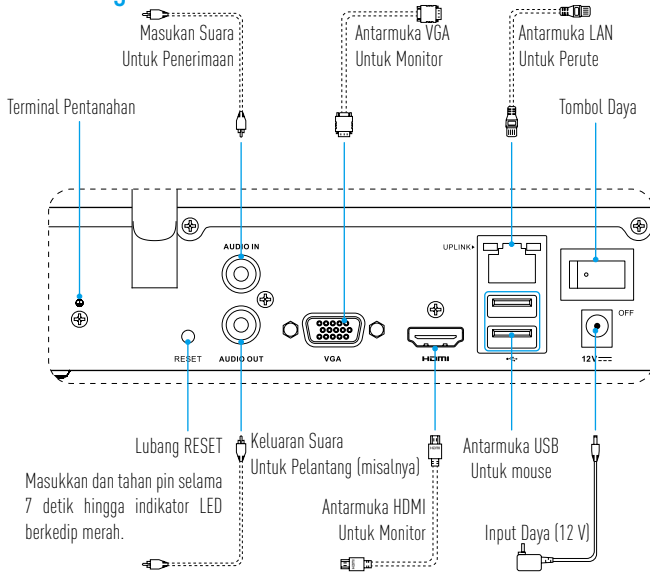


ID

**i** Untuk model yang dilengkapi dengan HDD (Hard Disk Drive), kit sekrup tidak disertakan.

## Gambar Produk

### Tinjauan Panel Belakang

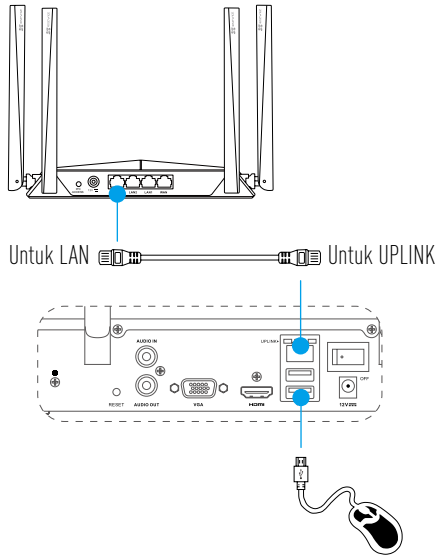


**i** Kabel bergaris putus-putus di atas tidak disertakan.

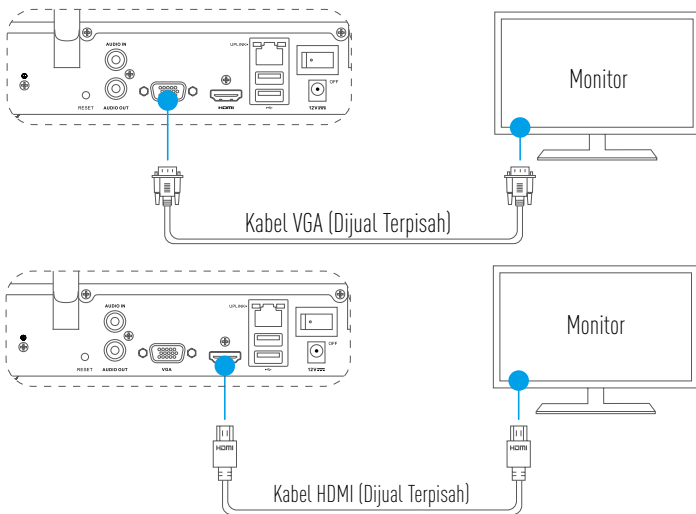
# Pemasangan Kabel

**i** Jika Anda ingin memasang HDD sendiri, baca [Lampiran](#).

1. Sambungkan antarmuka LAN pada NVR ke antarmuka LAN router dengan menggunakan kabel jaringan (disarankan).
2. Sambungkan mouse ke antarmuka USB NVR.



3. Sambungkan NVR ke Monitor menggunakan kabel VGA atau HDMI.

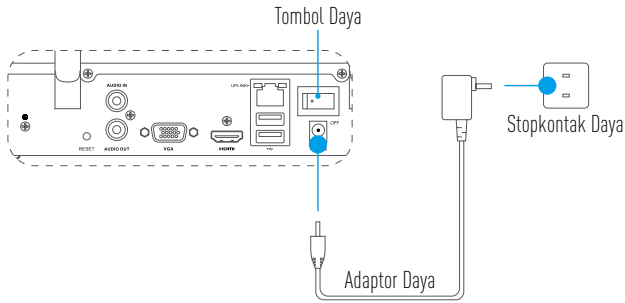


**i** Pilih sumber sinyal Monitor sesuai jenis sambungan yang digunakan.

# Pengaturan

## Nyalakan daya

1. Sambungkan NVR ke stopkontak daya dan nyalakan tombol daya.



- i** Gunakan catu daya yang stabil untuk menghindari pengecualian perangkat atau bahkan kerusakan.
2. Tunggu hingga antarmuka Wisaya muncul pada Monitor dan buat kata sandi (Untuk akses pertama kali).

**i** Sebaiknya atur kata sandi baru untuk keamanan lebih baik.
3. Masuk ke NVR.
  - i** • Kata sandi admin adalah kode verifikasi pada label perangkat.
  - i** • Jika wizard tidak muncul, periksa langkah-langkah di atas.

## (Opsional) Mematikan

1. Di antarmuka pengoperasian NVR (Monitor), buka **Shutdown (Matikan)** di **Menu → Shutdown (Matikan)** lalu klik **Shutdown (Matikan)**.
2. Klik **Yes (Ya)**.

**i** Untuk perlindungan perangkat, jangan mematikan atau mencabut pasokan daya saat perangkat masih bekerja.

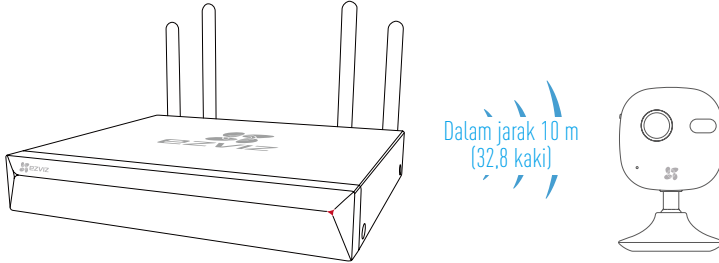
# Penautan

## Sambungan melalui Monitor

- Pastikan kamera dan perangkat menggunakan jaringan yang sama, baik melalui kabel atau nirkabel.
- i** • Kamera nirkabel dalam kondisi awal dapat ditambahkan ke jaringan Wi-Fi perangkat melalui langkah-langkah berikut ini.

Nyalakan semua perangkat sebelum memulai.

- Atur ulang kamera jika sudah disambungkan ke Wi-Fi sebelumnya.
- i** • Kamera dan perangkat harus berada dalam jarak maksimal 10 meter (32,8 kaki). Harap menjauh dari perangkat nirkabel atau penghalang untuk menghindari penurunan sinyal.

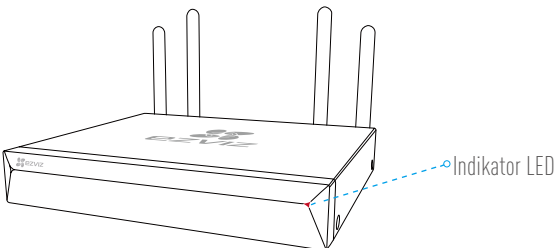


1. Buka **Camera Management (Manajemen Kamera)** di Menu → **Camera (Kamera)**.



2. Saat kamera siap tersambung ke Wi-Fi, klik **Search (Pencarian)**.
3. Klik tanda "+" untuk menambahkan kamera tertaut.
  - i** Kamera secara otomatis akan tersambung ke perangkat.

## Status Indikator LED



### Status Indikator LED

Hijau Tetap	Berfungsi Baik
Merah Tetap	Pengecualian Perangkat atau Alarm
Berkedip Merah	Pulihkan ke Setelan Pabrik

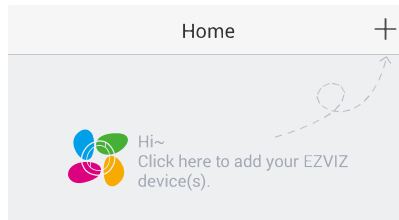


## Menautkan ke Aplikasi EZVIZ

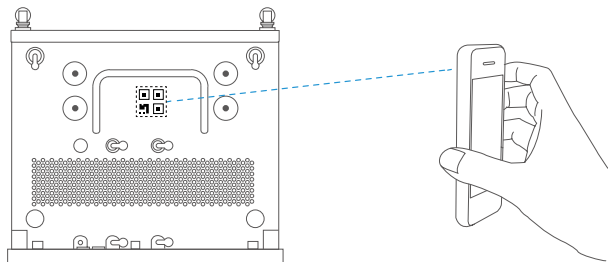
**i** Anda dapat menambahkan perangkat ke aplikasi EZVIZ untuk fungsi selengkapnya.

1. Unduh Aplikasi di Ponsel Anda (Opsional).
  - Cari "EZVIZ" di App Store/Google Play™ untuk mengunduh dan menginstal aplikasi.
  - Jalankan Aplikasinya.
  - Daftarkan akun pengguna EZVIZ.
2. Tambahkan NVR.
  - Login ke Aplikasi EZVIZ.
  - Klik tanda "+" di sudut kanan atas untuk masuk ke antarmuka pemindaian kode QR.

ID



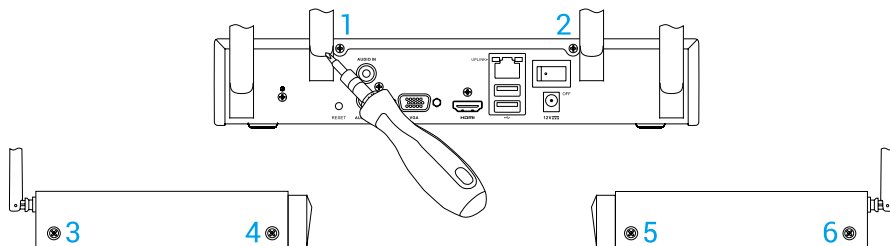
- Pindai Kode QR di bagian bawah untuk menambahkan perangkat.



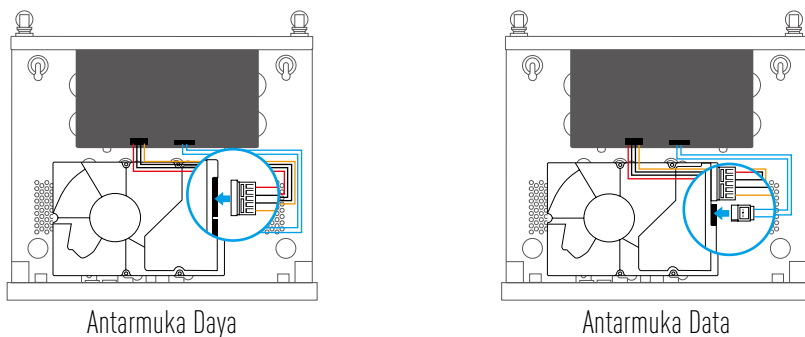
# Lampiran

## Pemasangan HDD

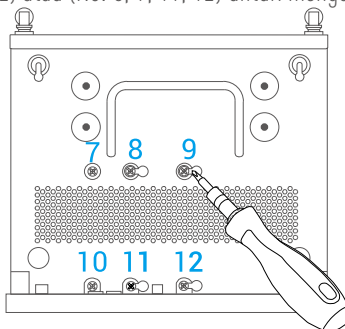
1. Kendorkan keenam sekrup No.1 hingga 6 di bagian belakang dan kedua sisi perangkat untuk melepaskan penutup.



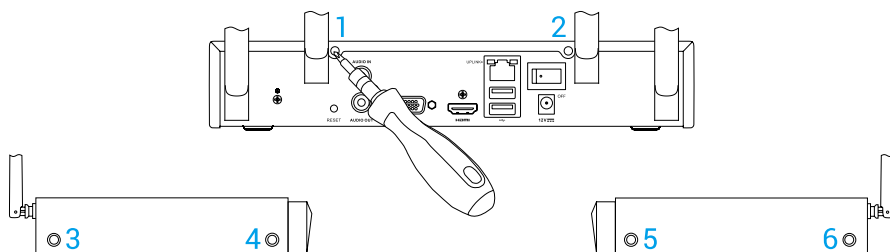
2. Masing-masing sambungkan kabel data dan kabel daya NVR dengan HDD.



3. Gunakan sekrup (No. 7, 9, 10, 12) atau (No. 8, 9, 11, 12) untuk mengencangkan HDD.

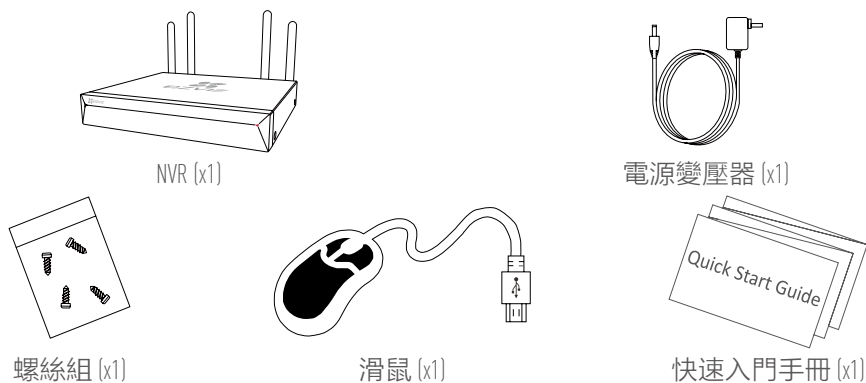


4. Rakit kembali NVR dengan sekrup (No.1 hingga No. 6).



# 基本資訊

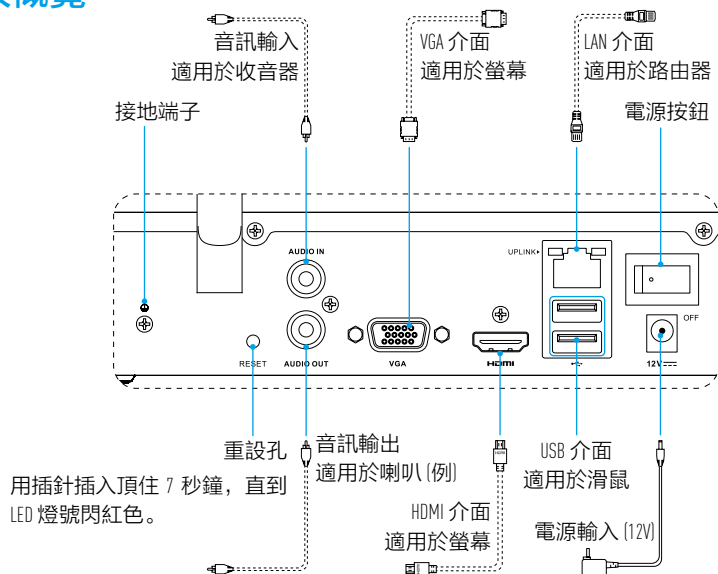
## 包裝盒內容



**i** 配備硬碟機的機型不附類似套件。

## 產品檢視

### 後面板概覽

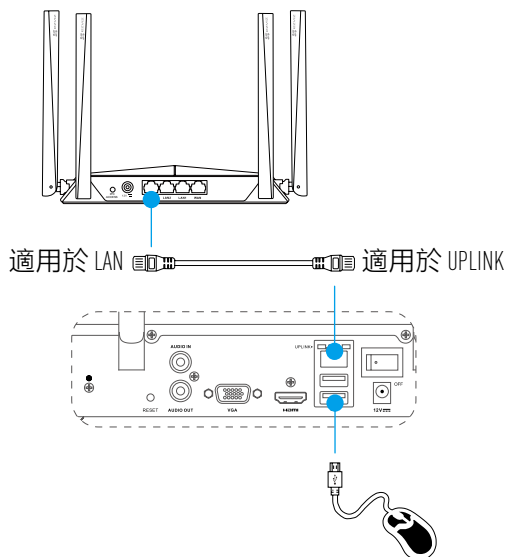


**i** 包裝盒內容不含上方標示虛線的連接線。

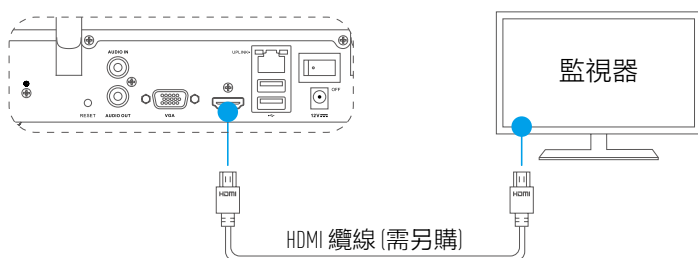
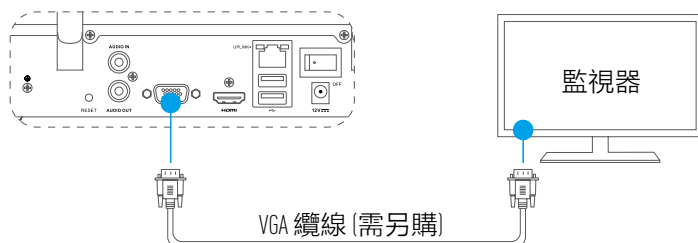
# 佈線

**i** 若您想要自行安裝硬碟，請參閱「附錄」。

1. 建議用網路線將 NVR 的 LAN 介面連接到路由器。
2. 將滑鼠連接至 NVR 的 USB 介面。



3. 使用 VGA 或 HDMI 纜線，將 NVR 連接至螢幕。

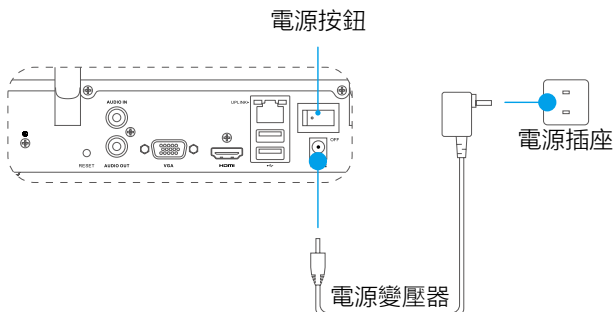


**i** 根據不同的連接方式，選擇對應的「螢幕」訊號源。

# 設定

## 開啟電源

1. 將 NVR 與電源插座連接，然後開啟電源按鈕。



- i** 使用穩定電源以避免裝置發生異常甚或損壞。
2. 靜待「螢幕」顯示「Wizard (精靈)」介面，然後設定密碼(限初次存取)。

**i** 建議您設定新密碼以提升安全性。

3. 登入 NVR。

**i**

- 管理員密碼是裝置標籤上的驗證碼。
- 若未顯示精靈，請檢查以上步驟。

## (選用) 關機

1. 在「NVR (螢幕)」的操作介面中，前往「Shutdown by Menu (透過功能表關機)」→「Shutdown (關機)」，然後按一下。

2. 按一下「Yes (是)」。

**i** 為保護裝置，切勿在裝置運作時關機或斷開電源供應。

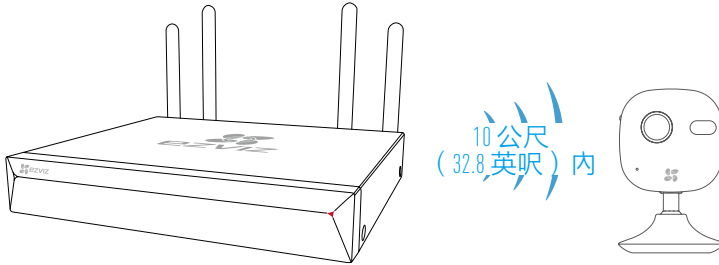
# 連接

## 透過監視器連結

- 確認攝影機與裝置使用相同的網路，有線或無線皆可。
- 可藉由以下步驟將初始狀態下的無線攝影機新增到裝置的 Wi-Fi 網路。

開始前，請開啟所有裝置的電源。

- 若攝影機先前連接過 Wi-Fi，可以將其重設。
- 攝影機與裝置的距離應不超過 10 公尺（32.8 英尺）。遠離無線裝置或障礙物以免訊號強度降低。



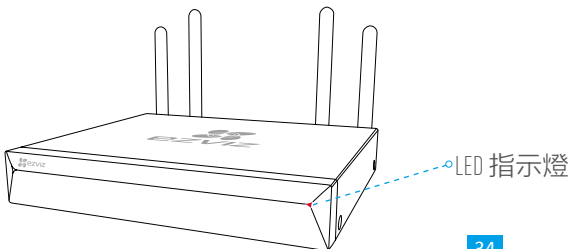
1. 進入 [ Menu (功能表) ] → [ Camera (攝影機) ]，選擇 [ Camera Management (攝影機管理) ]。



2. 當攝影機已準備好連接 Wi-Fi 時，按一下 [ Search (搜尋) ]。
3. 按一下 [ + ] 可新增連結的攝影機。

- 攝影機將自動連接至裝置。

## LED 指示燈狀態



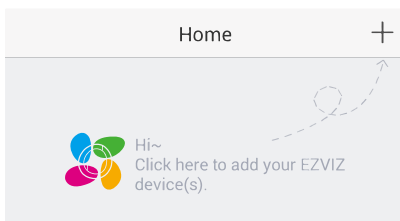
### LED 指示燈狀態

恆亮綠燈	運作正常
恆亮紅燈	裝置例外狀況或警報
閃紅燈	還原出廠預設值

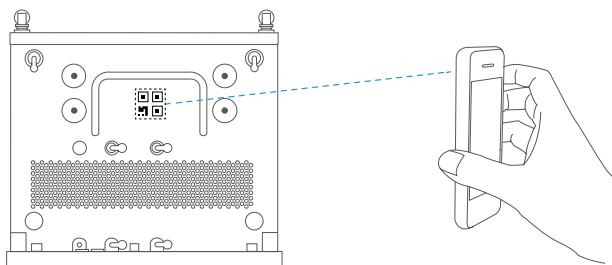
## 連結 EZVIZ 應用程式

**i** 您可將裝置新增至 EZVIZ 應用程式，以使用更多功能。

1. 在您的「手機」中下載「應用程式」(選用)。- 在 App Store/Google Play™ 搜尋「EZVIZ」以下載並安裝應用程式。
  - 開啟應用程式。
  - 註冊 EZVIZ 使用者帳戶。
2. 新增 NVR。
  - 登入 EZVIZ 應用程式。
  - 在右上角按一下「+」，前往 QR 碼掃描介面。



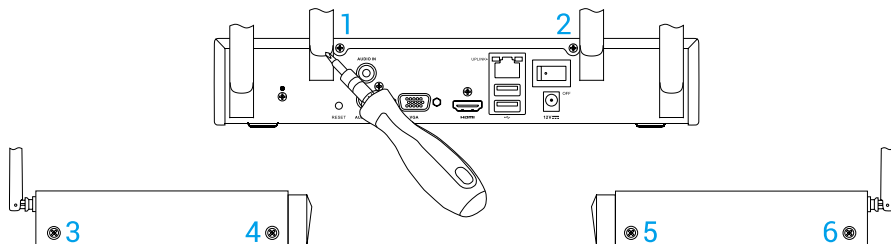
- 掃描底部的 QR 代碼以新增裝置。



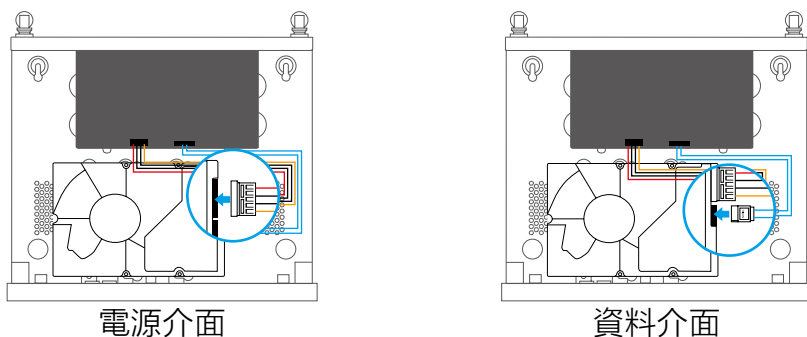
# 附錄

## 硬碟安裝

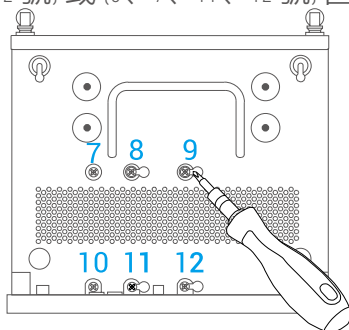
1. 鬆開位於裝置背面與左右兩側 1 號至 6 號的六個螺絲，以拆開外殼。



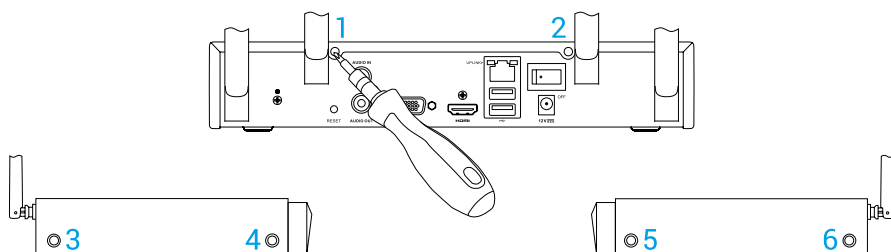
2. 將 NVR 的資料傳輸線和電源線分別與硬碟連接。



3. 請用螺絲 (7、9、10、12 號) 或 (8、9、11、12 號) 固定 HDD。



4. 使用螺絲 (1 號至 6 號) 重新裝妥 NVR。





## LIMITED WARRANTY

Thank you for purchasing Hangzhou EZVIZ Software Co., Ltd. ["EZVIZ"] products. This limited warranty ("warranty") gives you, the original purchaser of the EZVIZ product, specific legal rights. You may also have other legal rights that vary by state, province or jurisdiction. This warranty applies only to the original purchaser of the product. "Original purchaser" means any consumer having purchased the EZVIZ product from an authorized seller. The disclaimers, exclusions, and limitations of liability under this warranty will not apply to the extent prohibited by applicable law. No distributor, reseller, agent, or employee is authorized to make any modification, extension, or addition to this warranty.

Your EZVIZ product is warranted for a period of one (1) year from the date of purchase against defects in materials and workmanship, or such longer period as may be required by law in the country or state where this product is sold, when used normally in accordance with user manual.

You can request warranty service by contacting our Customer Service.

For any defective EZVIZ products under warranty, EZVIZ will, at its option, (i) repair or replace your product free of charge; (ii) exchange your product with a functional equivalent product; or (iii) refund the original purchase price, provided you provide the original purchase receipt or copy, a brief explanation of the defect, and return the product in its original packaging. At EZVIZ's sole discretion, repair or replacement may be made with a new or refurbished product or components. This warranty does not cover the shipping cost, insurance, or any other incidental charges incurred by you in returning the product.

Except where prohibited by applicable law, this is your sole and exclusive remedy for breach of this warranty. Any product that has either been repaired or replaced under this warranty will be covered by the terms of this warranty for the longer of ninety (90) days from the date of delivery or the remaining original warranty period.

This warranty does not apply and is void:

- If the warranty claim is made outside the warranty period or if the proof of purchase is not provided;
- For any malfunction, defect, or failure caused by or resulting from the evidence of impact; mishandling; tampering; use contrary to the applicable instruction manual; incorrect power line voltage; accident; loss; theft; fire; flood; or other Acts of God; shipping damage; or damage resulting from repairs performed by unauthorized personnel;
- For any consumable parts, such as batteries, where the malfunction is due to the normal aging of the product;
- Cosmetic damage, including but not limited to scratches, dents, and broken plastic on ports;
- Any software, even if packaged or sold with EZVIZ hardware;
- For any other damages free from defects in material or workmanship;
- Routine cleaning, normal cosmetic, and mechanical wear and tear.

### DISCLAIMER OF WARRANTIES

EXCEPT AS STATED ABOVE IN THIS WARRANTY, AND TO THE MAXIMUM EXTENT PERMITTED BY APPLICABLE LAW, EZVIZ DISCLAIMS ALL EXPRESS, IMPLIED, AND STATUTORY WARRANTIES AND CONDITIONS WITH RESPECT TO THE PRODUCT, INCLUDING THE IMPLIED WARRANTIES OF MERCHANTABILITY AND FITNESS FOR A PARTICULAR PURPOSE. THE DURATION OF ANY APPLICABLE IMPLIED WARRANTIES OR CONDITIONS TO THE DURATION OF THIS WARRANTY, THE SECURITY OF THE PRODUCT, OR AVAILABILITY AND RELIABILITY OF PRODUCT INFORMATION OR DATA.

NOTE: SOME STATES OR JURISDICTIONS DO NOT ALLOW LIMITATIONS ON HOW LONG AN IMPLIED WARRANTY LASTS, SO THE ABOVE LIMITATION MAY NOT APPLY TO YOU.

### LIMITATION OF DAMAGES

IN NO EVENT WILL EZVIZ BE LIABLE FOR ANY CONSEQUENTIAL, INCIDENTAL, EXEMPLARY, OR SPECIAL DAMAGES, INCLUDING ANY DAMAGES FOR LOST DATA OR LOST PROFITS, ARISING FROM OR RELATING TO THIS WARRANTY OR THE PRODUCT, AND EZVIZ'S TOTAL CUMULATIVE LIABILITY ARISING FROM OR RELATED TO THIS WARRANTY OR THE PRODUCT WILL NOT EXCEED THE AMOUNT ACTUALLY PAID FOR THE PRODUCT BY THE ORIGINAL PURCHASER.

NOTE: SOME STATES OR JURISDICTIONS DO NOT ALLOW THE EXCLUSION OR LIMITATION OF INCIDENTAL OR CONSEQUENTIAL DAMAGES, SO THE ABOVE LIMITATION OR EXCLUSION MAY NOT APPLY TO YOU.

### LIMITATION OF LIABILITY

ALL PRODUCT INFORMATION AND DATA IS PROVIDED FOR YOUR CONVENIENCE, "AS IS," AND "AS AVAILABLE." EZVIZ DOES NOT REPRESENT, WARRANT, OR GUARANTEE THAT PRODUCT INFORMATION AND DATA WILL BE AVAILABLE, ACCURATE, OR RELIABLE OR THAT PRODUCT INFORMATION AND DATA OR USE OF THE PRODUCT WILL PROVIDE SAFETY IN YOUR HOME. YOU USE ALL PRODUCT INFORMATION, DATA, AND THE PRODUCT AT YOUR OWN DISCRETION AND RISK. YOU WILL BE SOLELY RESPONSIBLE FOR (AND EZVIZ DISCLAIMS) ANY AND ALL LOSS, LIABILITY, OR DAMAGES, INCLUDING TO YOUR WIRING, FIXTURES, ELECTRICITY, HOME, PRODUCT, PRODUCT PERIPHERALS, COMPUTER, MOBILE DEVICE, AND ALL OTHER ITEMS AND PETS, RESULTING FROM YOUR USE OF THE PRODUCT INFORMATION, DATA, OR PRODUCT. PRODUCT INFORMATION AND DATA PROVIDED BY EZVIZ IS NOT INTENDED AS A SUBSTITUTE FOR DIRECT MEANS OF OBTAINING THE INFORMATION. FOR EXAMPLE, A NOTIFICATION PROVIDED THROUGH THE PRODUCT IS NOT INTENDED AS A SUBSTITUTE FOR AUDIBLE AND VISIBLE INDICATIONS IN THE HOME AND ON THE PRODUCT, NOR FOR A THIRD PARTY MONITORING SERVICE.

Please do not hesitate to contact your seller or our Customer Service, with any questions.

## 제한 보증

Hangzhou EZVIZ Software Co., Ltd.(이하 "EZVIZ") 제품을 구매해 주셔서 감사합니다. 이 제한 보증 (이하 "보증")은 EZVIZ 제품의 최초 구매자에게 제공되며 구체적인 법적 권리를 부여합니다. 또한 국가, 지방 또는 관할 지역에 따른 법적 권리를 보유할 수 있습니다. 이 보증은 제품의 최초 구매자에게만 적용됩니다. "최초 구매자"란 공인된 판매점으로부터 EZVIZ 제품을 구매한 모든 소비자를 의미합니다. 관련 법률에 의거 허용되지 않는 지역에서는 본 보증의 면책 조항, 배제 및 책임의 한계가 적용되지 않을 수 있습니다. 모든 유통 업체, 재판매자, 대리점 또는 직원은 본 보증을 변경, 연장 또는 추가할 권한이 없습니다.

귀하의 EZVIZ 제품은 구매 일자부터 일 (1) 년간 원자재 및 제조상의 결함에 대해 보증을 받을 수 있으며 제품을 구매한 국가 또는 주의 법률에 따라 더 긴 기간이 보장될 경우 일반적으로 사용 설명서에 명시됩니다.

고객 서비스에 문의하여 보증 서비스를 요청할 수 있습니다.

보증 기간 이내에 결함이 있는 모든 EZVIZ 제품에 대해, EZVIZ는 (i) 귀하의 제품을 무상으로 수리 또는 교체하거나, (ii) 귀하의 제품과 상응하는 기능을 탑재한 유사 제품으로 교체하거나, (iii) 귀하가 구매할 영수증 또는 복사본이 제공하는 바와 같이 처음 구매한 가격으로 환불할 것이며, 귀하는 결함에 관한 간략한 설명과 함께 본래 포장 상태로 제품을 반납해야 합니다. EZVIZ의 단독 재량에 따라 수리 또는 교체 시 신제품, 리퍼 제품 또는 부품이 사용됩니다. 본 보증은 귀하가 제품을 반납할 때 발생하는 배송비, 보험 및 기타 부대비용을 보장하지 않습니다.

관련 법률에 의거 금지되는 지역을 제외하고 본 보증은 보증 위반에 관한 단독적이며 독점적인 구제 방법입니다. 본 보증에 따라 수리 또는 교체된 모든 제품은 제품 수형일 또는 잔존하는 최초 보증 기간에서 구입 (ii) 일의 추가 보증 기간이 적용됩니다.

다음과 같은 경우 이 보증은 적용되지 않으며 효력이 없습니다.

- 보증 기간이 지난 후 보증을 청구하거나 제품 구매 증빙을 제출하지 않는 경우;
- 충격, 취급 부주의, 조작, 사용 설명서의 지침을 위반하는 사용, 잘못된 전압 연결, 사고, 분실, 도난, 화재, 홍수 등의 기타 천재지변, 운송 관련 손상 또는 허가 받지 않은 사람에 의한 수리로 발생한 손상으로 인해 오작동, 결함 또는 고장이 발생한 경우;
- 배터리 등의 소모성 부품 등 정상적인 제품 노후로 인해 오작동이 발생한 경우;
- 굽힘, 흡진, 플라스틱 깨짐 및 이에 국한하지 않고 외관이나 손상된 경우;
- 제품에 포함되었거나 EZVIZ 하드웨어와 함께 판매된 소프트웨어가 손상된 경우;
- 기타 원자재 또는 제조상의 결함과 무관한 손상에 해당하는 경우;
- 일상적인 청소, 일반적인 외관 및 기계적인 마모에 해당하는 경우.

### 보증 면책 조항

본 보증의 상기 명시된 항목을 제외하고 관련 법규를 허용하는 최대 범위 내에서 EZVIZ는 시장 적합성의 묵시적 보증과 특정 목적에의 적합성, 적용 가능한 묵시적 보증 기간 또는 본 보증 기간에 관한 조건, 제품 보안, 또는 제품 정보 및 데이터의 가용성 및 신뢰성 등 제품과 관련된 조건을 포함한 모든 명시적, 묵시적 및 법적 보증을 부인합니다.

참고: 일부 주 또는 관할 구역은 묵시적 보증의 유효 기간에 관한 제한을 허용하지 않으므로, 상기 제한 사항이 귀하에게 적용되지 않을 수도 있습니다.

### 손해의 제한

EZVIZ는 본 보증 또는 제품과 관련된 발생한 데이터 유실 또는 수익 손실로 인한 결과적, 부수적, 징벌적 또는 특별 손해에 대해 일체의 책임을 지지 않으며 또한 본 보증 또는 제품과 관련된 발생한 EZVIZ의 총 보상 책임은 제품을 최초 구매할 때 발생한 실구매 금액의 총액을 초과하지 않습니다.

참고: 일부 주 또는 관할 구역은 부수적 또는 결과적 손해에 관한 예외 또는 제한을 허용하지 않으므로, 상기 제한 또는 예외 조항은 귀하에게 적용되지 않을 수 있습니다.

### 책임의 제한

모든 제품과 데이터는 귀하의 편의를 위해 "있는 그대로" 및 "이용할 수 있는 상태로" 제공됩니다. EZVIZ는 제품 정보와 데이터의 가용성, 정확도 또는 신뢰도를 대변하거나 보증하거나 보장하지 않으며, 해당 제품 정보 및 데이터 또는 제품의 사용이 귀하 가정에 안전을 제공한다고 대변하거나 보증하거나 보장하지 않습니다. 귀하는 제품의 모든 정보와 데이터를 사용하여 귀하의 재량에 따른 제품 사용에는 위험이 존재합니다. 귀하는 제품 정보, 데이터 및 제품을 사용함에 있어 발생하는 배선 연결, 고정, 전기, 가열, 제품, 제품 주변 기기, 컴퓨터, 모바일 기기 및 기타 모든 물품과 변동물 등 관련 일체의 손실, 책임, 손상에 관해 전적으로 책임 (및 EZVIZ의 면책) 이 있습니다. EZVIZ가 제공하는 제품 정보 및 데이터는 정보를 획득하는 직접적인 방법의 대체 수단을 의미하지 않습니다. 예를 들어 제품이 제공하는 알람은 가정 및 제품의 음성적 및 시각적 표시를 대체하지 않으며 제 3자의 모니터링 서비스의 의미하는 것이 아닙니다. 문의 사항이 있는 경우 언제든지 판매점 또는 고객 서비스에 연락해주시십시오.



## GARANSI TERBATAS

Terima kasih telah membeli produk Hangzhou EZVIZ Software Co., Ltd. ("EZVIZ"). Garansi terbatas ini ("garansi") memberi Anda, pembeli pertama produk EZVIZ, hak-hak hukum spesifik. Anda juga dapat memiliki hak hukum lainnya yang berbeda berdasarkan negara bagian, provinsi, atau yurisdiksi. Garansi ini hanya berlaku untuk pembeli pertama produk. "Pembeli pertama" berarti setiap konsumen yang telah membeli produk EZVIZ dari penjual resmi. Penafian, pengecualian, dan batasan tanggung jawab berdasarkan garansi ini tidak akan berlaku sejauh dilarang oleh hukum yang berlaku. Distributor, pengecer, agen, atau karyawan tidak diizinkan untuk membuat perubahan, perpanjangan, atau penambahan pada garansi ini.

Produk EZVIZ Anda mendapatkan garansi selama periode dua (1) tahun dari tanggal pembelian terhadap kecacatan bahan dan kualitas pengerjaan, atau periode yang lebih panjang jika disyaratkan oleh hukum di negara atau negara bagian tempat produk ini dijual, saat digunakan secara normal sesuai dengan panduan pengguna.

Anda dapat meminta layanan garansi dengan menghubungi Layanan Pelanggan Kami.

Untuk setiap produk EZVIZ yang rusak dalam masa garansi, EZVIZ akan, sesuai pilihannya, (i) memperbaiki atau mengganti produk Anda secara gratis; (ii) menukar produk Anda dengan produk yang berfungsi setara; atau (iii) mengembalikan harga pembelian asli, dengan ketentuan Anda memberikan tanda terima pembelian asli atau salinannya, penjelasan singkat tentang cacat, dan mengembalikan produk dalam kemasan aslinya. Atas pertimbangan EZVIZ sendiri, perbaikan atau penggantian dapat dilakukan dengan produk atau komponen yang baru atau rekondisi. Garansi ini tidak mencakup biaya pengiriman, asuransi, atau biaya tak terduga lainnya yang Anda keluarkan dalam pengambilan produk.

Keuaja jika dilarang oleh hukum yang berlaku, ini adalah solusi Anda satu-satunya dan eksklusif untuk pelanggaran garansi ini. Setiap produk yang telah diperbaiki atau diganti dalam garansi ini akan ditanggung oleh ketentuan garansi ini selama sembilan puluh (90) hari sejak tanggal pengiriman atau sisa masa garansi asal manapun yang lebih panjang.

Garansi ini tidak akan berlaku dan batal:

- Jika klaim garansi dilakukan di luar masa garansi atau jika bukti pembelian tidak disediakan;
- Untuk segala malafungsi, kecacatan, atau kegagalan yang nyata-nyata disebabkan oleh atau akibat adanya benturan; salah penanganan; perusakan; penggunaan yang bertentangan dengan petunjuk penggunaan yang berlaku; tegangan saluran listrik yang salah; kecelakaan; kehilangan; pencurian; kebakaran; banjir; atau bencana alam lainnya; kerusakan pengiriman; atau kerusakan yang disebabkan oleh perbaikan yang dilakukan oleh personel yang tidak berwenang;
- Untuk setiap komponen habis pakai, seperti baterai, di mana malafungsi disebabkan oleh penenaan normal produk;
- Kerusakan kosmetik, termasuk tetapi tidak terbatas pada goresan, penyok, dan plastik pecah pada port;
- Perangkat lunak apa pun, meskipun dikemas atau dijual bersama perangkat keras EZVIZ;
- Untuk kerusakan selain cacat bahan atau kualitas pengerjaan;
- Pembersihan rutin, kosmetik normal, dan aus karena pemakaian.

### PENAFIAN GARANSI

KEDUAJALU SEPERTI DINYATAKAN DI ATAS DALAM GARANSI, DAN SEPANJANG DIPERBOLEHKAN OLEH HUKUM YANG BERLAKU, EZVIZ MENAFIKAN SEMUA GARANSI TERSURAT, TERSIRAT, DAN HUKUM SERTA KETENTUAN TERKAT PRODUK, TERMASUK GARANSI TERSIRAT KOMERSIAL, DAN KECUCCOKAN UNTUK KEPERLUAN TERTEWU, DURASI GARANSI ATAU KETENTUAN TERSIRAT HINGGA DURASI GARANSI INI, KEAMANAN PRODUK, ATAU KETERSEDIAAN ATAU PUN KEANDALAN INFORMASI ATAU DATA PRODUK.

CATATAN: BEBERAPA NEGARA BAGIAN ATAU YURISDIKSI TIDAK MENGINZINKAN PEMBATASAN BERAPA LAMA GARANSI JAMINAN TERSIRAT BERLANGSUNG, SEHINGGA PEMBATASAN DI ATAS MUNGKIN TIDAK BERLAKU UNTUK ANDA.

### PEMBATASAN KERUSAKAN

DALAM KEADAAN APA PUN, EZVIZ TIDAK AKAN BERTANGGUNG JAWAB ATAS KERUSAKAN KONSEKUENSIAL, INSIDENTAL, EKSEMPLAR, ATAU KERUSAKAN KHUSUS, TERMASUK KERUGIAN AKIBATILANGNYA DATA ATAU HILANGNYA LABA, YANG TIMBUL DARI ATAU YANG BERKAITAN DENGAN GARANSI ATAU PRODUK INI, DAN KEWAJIBAN KUMULATIF EZVIZ TOTAL YANG TIMBUL DARI ATAU YANG BERKAITAN DENGAN GARANSI ATAU PRODUK INI TIDAK AKAN MELEBIHI JUMLAH AKTUAL YANG DIYARIKAN UNTUK PRODUK INI OLEH PEMBELI PERTAMA.

CATATAN: BEBERAPA NEGARA BAGIAN ATAU YURISDIKSI TIDAK MENGINZINKAN PENGECCUALIAN ATAU PEMBATASAN KERUGIAN INSIDENTAL ATAU KONSEKUENSIAL, SEHINGGA PEMBATASAN ATAU PENGECCUALIAN DI ATAS MUNGKIN TIDAK BERLAKU UNTUK ANDA.

### PEMBATASAN KEWAJIBAN

SEMUA INFORMASI DAN DATA PRODUK DISEDIAKAN UNTUK NYAMANAN ANDA, "SEBAGAIMANA ADANYA", DAN "SEBAGAIMANA TERSEDIA". EZVIZ TIDAK MENYATAKAN, MENJAMIN, ATAU MEMBERI GARANSI BAHWA INFORMASI DAN DATA PRODUK AKAN TERSEDIA, AKURAT, ATAU DAPAT DIANDALKAN ATAU BAHWA INFORMASI DAN DATA PRODUK ATAU PENGGUNAAN PRODUK INI AKAN MEMBERIKAN KESELAMATAN DI RUMAH ANDA. ANDA MENGGUNAKAN SEMUA INFORMASI PRODUK DAN DATA, SERTA PRODUK ITU SENDIRI ATAS PERTIMBANGAN DAN RISIKO ANDA SENDIRI. ANDA SECARA PRIBADI BERTANGGUNG JAWAB ATAS (DAN EZVIZ MENAFIKAN) SEGALA DAN SEMUA KERUGIAN, KEWAJIBAN, ATAU KERUSAKAN, TERMASUK TERHADAP PENGABELAN, PERABAT, LISTRIK, RUMAH, PRODUK, PRODUK PERIFERAL, KOMPUTER, PERANGKAT SELULER, DAN SEMUA ITEM DAN BENSURAN PELUHAN LAIN, YANG DIKAITKAN DENGAN PENGGUNAAN INFORMASI DAN DATA PRODUK, SERTA PRODUK, INFORMASI DAN DATA PRODUK YANG DISEDIAKAN OLEH EZVIZ TIDAK DITUJUKAN SEBAGAI PENGANTI CARA LANGSUNG MENDAPATKAN INFORMASI. MISALNYA, PEMBERITAHAUAN YANG DIBERIKAN MELALUI PRODUK INI TIDAK DITUJUKAN SEBAGAI PENGANTI UNTUK INDIKASI YANG DAPAT DIDENGAR DAN DIHATI DI RUMAH DAN PADA PRODUK, ATAU UNTUK LAYANAN PEMANTAUAN PIHAK KETIGA.

Anda dipersilakan menghubungi penjual atau Layanan Pelanggan kami jika memiliki pertanyaan apa pun.

## 有限保固

感謝您購買 Hangzhou EZVIZ Software Co., Ltd. (簡稱「EZVIZ」) 的產品。本有限保固 (簡稱「保固」) 向身為 EZVIZ 產品原購買者的您提供明確之法律權利。針對不同州、省或轄區, 您還可以享受其他的法律權利。本保固僅適用於產品的原購買者。「原購買者」是指向授權賣方購買 EZVIZ 產品的任何消費者。在本保固條件下之免責聲明、除外責任條款及責任限制, 將不適用於適用法律所禁止的範圍。經銷商、轉售商、代理商或員工都未經授權對本保固進行任何修改、延長或新增。

您的 EZVIZ 產品從購買日起算—(1) 年內針對材質和工藝保固有效, 或依據本產品販售地的國家或州/省法律可以有更長的保固期, 前提是本產品在使用上有符合使用手冊的要求。

您可以聯述我們的客服部門, 以提出保固服務的請求。

在保固條件下任何有瑕疵的 EZVIZ 產品, EZVIZ 將有權選擇 (1) 免費修理或更換您的產品; (2) 以功能相當的產品來交換您的產品; 或 (3) 退還原購買金額, 前提是您必須提供原始購買收據或收據複本、簡單說明瑕疵狀況, 並且以原包裝退回該產品。EZVIZ 可自行決定是否要以全新或整修過的產品或零件來修理或更換。本保固不涵蓋運輸成本、保險費, 或由於您退還產品所產生的其他任何附帶費用。

除非適用法律明列禁止, 否則這是您在違反本保固時的唯一和專屬補救方法。對於已根據本保固所修理或更換的任何產品, 本保固條款所涵蓋的保固期間, 從交貨日起算九十九 (90) 天, 或者為原保固期剩餘天數, 以兩者中較長天數計算。

本保固不適用且無效的範圍包括:

- 申請保固索賠的時間已超出保固期, 或未提供購買證明;
- 由於衝擊、處理不當、篡改、使用方法有違指導手冊、電源線電壓不正確、意外事故、遺失、失竊、火災、水災或其他天然災害、運輸損壞或未授權之人員進行修理致使損壞所造成或導致的任何故障、缺陷或失效;
- 任何諸如電池等隨著產品正常老化導致故障的耗材零件;
- 外觀損壞, 包括但不限於刮痕、凹痕及連接埠上的破裂塑材;
- 任何軟體, 即使是隨著 EZVIZ 硬體一起包裝或販售的軟體也包括在內;
- 任何其他非因材質或工藝所致的損壞;
- 日常清潔、正常外觀和機械性磨損和撕裂。

### 保固免責聲明

除了本保固以上所述及適用法律所允許之最大範圍以外, EZVIZ 拒絕接受與本產品有關的所有明示、默示及法定保證和條件, 包括適售性和適用特定目的之默示保證。對本保固持續期間任何適用的默示保證或條件之持續期間、產品安全性, 或產品資訊或資料的可用性和可靠性。註記: 有些州或司法管轄區不允許限制默示保證的持續時間, 因此上述限制可能對您不適用。

### 損害賠償限制

對於任何間接、附帶、懲罰性或特殊損害, EZVIZ 絕不承擔責任, 包括因本保固或本產品而產生或與本保固或本產品有關之資料遺失或利潤損失所導致的任何損害, 而且 EZVIZ 對於因本保固或本產品而產生或與本保固或本產品有關的總累積責任, 將不會超出原購買者為本產品所實際支付的金額。

註記: 有些州或司法管轄區不允許排除或限制附帶或間接損害, 因此上述限制或除外責任條款可能對您不適用。

### 責任範圍

所有產品資訊和資料「按現狀」且「按可用性」都旨在為您提供便利性。EZVIZ 不表示、擔保或保證產品資訊和資料將可用、準確或可靠, 或本產品之產品資訊和資料或使用將為您提供居家安全。所有產品資訊、資訊和本產品都必須在您自我裁量並評估風險後再來使用。您將單獨承擔 (而且 EZVIZ 有免責權) 任何及所有損失、責任或損害, 包括由於您使用本產品資訊、資料或產品而對配線、固件、電力、住家、產品、產品週邊設備、電腦、行動裝置以及其他所有物品和寵物所造成的損失、責任或損害。EZVIZ 所提供的產品資訊和資料, 並非是要取代或為獲得資訊的直接手段。舉例來說, 透過本產品提供的通知用意不在於取代家裡和產品上的聽覺和視覺指示, 也不是要取代第三方的監視服務。

若有任何問題, 請立即連述我們的賣方或我們的客服部門。

